



# VIKING

*Industrial Center*

**Fastener, Safety & Strut Specialists**

## **Construction Anchors Threaded Rod**



**ST PAUL**

- 651-646-6374
- 800-328-6505

**DULUTH**

- 218-624-4851
- 800-232-1367

**FOREST LAKE**

- 651-756-8758
- 800-328-6505

**2024**

[www.vikingindustrialcenter.com](http://www.vikingindustrialcenter.com)



**Viking Industrial Center** is a family-owned business that has served thousands of companies and customers since 1959. Viking started out in the heart of the Twin Cities by selling fastening tools and equipment for construction. Shortly thereafter we added a full line of safety products. The two product lines worked in tandem, providing a broad array of quality construction fastening and safety products at reasonable prices with personalized service. Finally, a full line of strut products was added.

Viking has three convenient Minnesota locations. Our St. Paul and Columbus stores service walk-in customers in the Twin Cities metro area and suburbs. Our Duluth location is easily accessible to customers in northern Minnesota and northwestern Wisconsin.

Our service representatives can visit you at your site.

Unable to stop in? Place your order online through our website. We have in-stock inventory ready to ship out immediately. If you don't see what you are looking for, please give us a call. We have a very knowledgeable customer service staff waiting to assist you!

We take pride in our company and enjoy giving advice on products and helping our customers find what is right for them and their situations. Please contact us with any questions about our company or our products.

## Viking Industrial Center Offers Jobsite Service



### Customer Service Centers

**Store Hours: 7:00 a.m. - 4:00 p.m.  
Monday - Friday**

**St. Paul**  
2550 Kasota Avenue  
(800) 328-6505  
Phone (651) 646-6374  
Fax (651) 646-7546  
info@vikingindustrialcenter.com

**Forest Lake**  
9205 Lake Drive NE  
(800) 328-6505  
Phone (651) 756-8758  
Fax (651) 797-2942  
info@vikingindustrialcenter.com

**Duluth**  
4730 Grand Avenue  
(800) 232-1367  
Phone (218) 624-4851  
Fax (218) 624-4788  
info@vikingindustrialnorth.com

PLEASE NOTE: No expressed or implied warranties are made in this catalog.  
Specifications are subject to change without notice.  
Please call Viking Industrial Center at 1-800-328-6505 for current product data.

## TERMS OF SALE

**Payment:** Net 30 days from invoice date.

**FOB:** Shipping Point.

**Transportation:** We will determine the best methods for transportation unless specified in order.

**Returned Goods:** Goods may be returned for credit, exchange or replacement only with authorization and subject to inspection and restocking charge.

**Special & Custom Items:** Special order and custom-made items become the property of the buyer and ARE NON-RETURNABLE.

**New Accounts:** In order to expedite shipments to new accounts, payment in full must accompany order. We do not make COD shipments.

**Prices:** All prices are subject to change or withdrawal without prior notice.

**Credit Cards:** We accept for credit card purchases



**NOTICE: There is a minimum purchase of \$10 per order.**

As our valued customer, you expect us to supply quality merchandise from reputable manufacturers at a fair market price, to ship and invoice your orders as rapidly as possible and to service what we sell.

As your supplier, we expect you to pay all bills according to our invoice terms, give us a reasonable amount of time to process "Will Call" orders, allow sufficient lead time for special and custom-made items, and most important, to let us know if there is a problem of any kind.

### Transportation of Hazardous Materials

A. Hazardous Materials cannot be shipped by air.

B. Hazardous Materials Shipped by UPS Ground Service require special processing and labeling and are subject to a special UPS handling charge.

C. Customers will be notified if the product being ordered is considered hazardous material. Some of the most common items classified as hazardous by the DOT are: compressed air and oxygen (for breathing equipment), test gas kits and cylinders, fusee flares and dry chemical fire extinguishers. Other products may be included as the DOT regulates.

# NOTES

# Construction Anchors & Threaded Rod





<b>Titen HD® High Strength Screw Anchors for Concrete &amp; Masonry</b>	<b>3</b>
<b>Titen HD® Stainless Steel and Rod Hangers</b>	<b>4</b>
<b>Carbon Steel Wedge Anchors</b>	<b>5</b>
<b>Stainless Steel Wedge Anchors</b>	<b>6</b>
<b>Sleeve Anchors</b>	<b>7</b>
<b>Acrylic &amp; Epoxy Adhesive Cartridges</b>	<b>8</b>
<b>ET-HP Epoxy &amp; Dispensing Tools</b>	<b>9</b>
<b>Hole Cleaning Brushes &amp; Opti-Mesh Screen Tubes</b>	<b>10</b>
<b>Threaded Rod</b>	<b>11</b>
<b>SAMMYS™ Screws</b>	<b>12-13</b>
<b>Drop-In™ Expansion Shell Anchor</b>	<b>14</b>
<b>Expansion Shields &amp; Hollow Set Anchors</b>	<b>15</b>
<b>Concrete Masonry Anchors</b>	<b>16</b>
<b>Masonry Drive Anchors &amp; Split Drive Anchors</b>	<b>17</b>
<b>Nail-In Drive Anchors &amp; Spring Wing Toggles</b>	<b>18</b>
<b>Hollow &amp; Solid Wall Anchors</b>	<b>19</b>
<b>Self Drilling Drywall &amp; Hollow Wall Anchors</b>	<b>20</b>
<b>Plastic Screw Anchors</b>	<b>21</b>

**Titen HD Anchor - Zinc Plated**



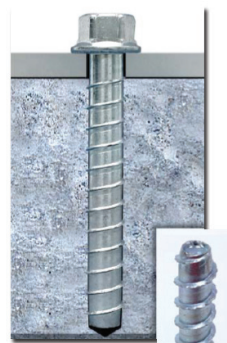
Size (in)	Order Number	Drill Bit Dia. (in)	Wrench Size (in)	Quantity	
				Box	Carton
1/4 x 1-3/4	THD25175	1/4	3/8	100	500
1/4 x 1-7/8	THD25178			100	500
1/4 x 2-1/4	THD25214			50	250
1/4 x 2-3/4	THD25275			50	250
1/4 x 3	THD25300			50	250
1/4 x 4	THD25400			50	250
3/8 x 1-3/4	THD38134	3/8	9/16	50	250
3/8 x 2-1/2	THD38250			50	200
3/8 X 3	THD38300			50	200
3/8 X 4	THD38400			50	200
3/8 X 5	THD38500			50	100
3/8 X 6	THD38600			50	100
1/2 X 3	THD50300	1/2	3/4	25	100
1/2 X 4	THD50400			20	80
1/2 X 5	THD50500			20	80
1/2 X 6	THD50600			20	80
1/2 X 6-1/2	THD50650			20	80
1/2 X 8	THD50800			20	40
1/2 X 12	THD50912			20	40
1/2 X 13	THD50913			20	40
1/2 X 14	THD50914			20	40
1/2 X 15	THD50915			20	40
5/8 X 4	THD62400	5/8	15/16	10	40
5/8 X 5	THD62500			10	40
5/8 X 6	THD62600			10	40
5/8 X 6-1/2	THD62650			10	40
5/8 X 8	THD62800			10	40
3/4 X 4	THD75400			3/4	1-1/8
3/4 X 5	THD75500	5	20		
3/4 X 6	THD75600	5	20		
3/4 X 7	THD75700	5	10		
3/4 x 8-1/2	THD75850	5	10		
3/4 x 10	THD759100	5	10		

**Titen HD Anchor - Mechanically Galvanized**

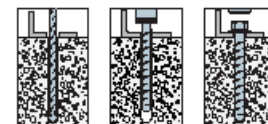
Size (in)	Order Number	Drill Bit Dia. (in)	Wrench Size (in)	Quantity	
				Box	Carton
3/8 x 3	THDMG38300	3/8	9/16	50	200
3/8 x 4	THDMG38400			50	200
3/8 X 5	THDMG38500			50	100
3/8 X 6	THDMG38600			50	100
1/2 x 3	THDMG50300	1/2	3/4	50	150
1/2 x 4	THDMG50400			20	80
1/2 X 5	THDMG50500			20	80
1/2 X 6	THDMG50600			20	80
1/2 X 6-1/2	THDMG50650			20	80
1/2 X 8	THDMG50800			20	80
5/8 X 5	THDMG62500	5/8	15/16	10	40
5/8 X 6	THDMG62600			10	40
5/8 X 6-1/2	THDMG62650			10	40
5/8 X 8	THDMG62800			10	40
3/4 x 10	THDMG759100	3/4	15/16	5	10

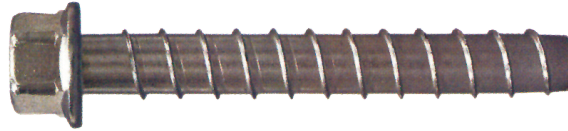


U.S. Patent  
5,674,035 & 6,623,228



\*12 point socket required





**Titen HD Anchor - .304 Stainless Steel**

Size (in)	Order Number	Drill Bit Dia. (in)	Wrench Size (in)	Quantity	
				Box	Carton
3/8 X 3	<b>THDHWSS38300</b>	3/8	9/16	50	200
3/8 X 4	<b>THDHWSS38400</b>			50	200
3/8 X 5	<b>THDHWSS38500</b>			50	100
3/8 X 6	<b>THDHWSS38600</b>			50	100
1/2 X 3	<b>THDHWSS50300</b>	1/2	3/4	25	100
1/2 X 4	<b>THDHWSS50400</b>			20	80
1/2 X 5	<b>THDHWSS50500</b>			20	80
1/2 X 6	<b>THDHWSS50600</b>			20	80
1/2 X 6-1/2	<b>THDHWSS50650</b>			20	40
1/2 X 8	<b>THDHWSS50800</b>			20	40
5/8 X 4	<b>THDHWSS62400</b>	5/8	15/16	10	40
5/8 X 5	<b>THDHWSS62500</b>			10	40
5/8 X 6	<b>THDHWSS62600</b>			10	40
5/8 X 6-1/2	<b>THDHWSS62650</b>			10	40
5/8 X 8	<b>THDHWSS62800</b>			10	40
3/4 X 4	<b>THDHWSS75400</b>	3/4	1-1/8	10	40
3/4 X 5	<b>THDHWSS75500</b>			5	20
3/4 X 6	<b>THDHWSS75600</b>			5	20
3/4 X 7	<b>THDHWSS75700</b>			5	10
3/4 x 8-1/2	<b>THDHWSS75850</b>			5	10

**Titen HD Anchor - .316 Stainless Steel**

Size (in)	Order Number	Drill Bit Dia. (in)	Wrench Size (in)	Quantity	
				Box	Carton
3/8 X 3	<b>THDHWSS38300-316</b>	3/8	9/16	50	200
3/8 X 4	<b>THDHWSS38400-316</b>			50	200
3/8 X 5	<b>THDHWSS38500-316</b>			50	100
3/8 X 6	<b>THDHWSS38600-316</b>			50	100
1/2 X 3	<b>THDHWSS50300-316</b>	1/2	3/4	25	100
1/2 X 4	<b>THDHWSS50400-316</b>			20	80
1/2 X 5	<b>THDHWSS50500-316</b>			20	80
1/2 X 6	<b>THDHWSS50600-316</b>			20	80
1/2 X 6-1/2	<b>THDHWSS50650-316</b>			20	40
1/2 X 8	<b>THDHWSS50800-316</b>			20	40
5/8 X 4	<b>THDHWSS62400-316</b>	5/8	15/16	10	40
5/8 X 5	<b>THDHWSS62500-316</b>			10	40
5/8 X 6	<b>THDHWSS62600-316</b>			10	40
5/8 X 6-1/2	<b>THDHWSS62650-316</b>			10	40
5/8 X 8	<b>THDHWSS62800-316</b>			10	40
3/4 X 4	<b>THDHWSS75400-316</b>	3/4	1-1/8	10	40
3/4 X 5	<b>THDHWSS75500-316</b>			5	20
3/4 X 6	<b>THDHWSS75600-316</b>			5	20
3/4 X 7	<b>THDHWSS75700-316</b>			5	10
3/4 x 8-1/2	<b>THDHWSS75850-316</b>			5	10



**Titen HD Rod Hanger**

Size (in)	Item Number	Accepts Rod Dia. (in.)	Drill Bit Dia. (in)	Wrench Size (in)	Min. Embed.	Quantity	
						Box	Carton
1/4 X 1-1/2	<b>THD25112RH</b>	1/4	1/4	3/8	1-1/2	100	500
3/8 X 2-1/8	<b>THD37218RH</b>	3/8	1/4	1/2	2-1/8	50	250
1/2 X 2-3/4	<b>THD50234RH</b>	1/2	3/8	11/16	2-3/4	50	200

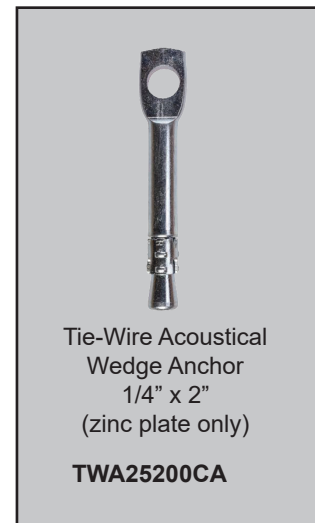


## Carbon Steel, Zinc Plated and Mechanically Galvanized Wedge Anchors

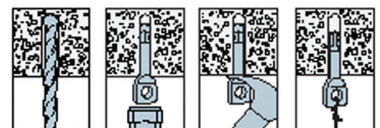
Size (in)	Zinc Plated Carbon Steel	Mechanically Galvanized	Drill Bit Dia. (in)	Thread Length	Quantity	
					Box	Carton
1/4 X 1-3/4	WA25175	WAMG25175	1/4"	15/16	100	500
1/4 X 2-1/4	WA25225	WAMG25225		1-7/16	100	500
1/4 X 3-1/4	WA25325	WAMG25325		2-7/16	100	500
3/8 X 2-1/4	WA38225	WAMG38225	3/8"	1-1/8	50	250
3/8 X 2-3/4	WA33275	WAMG38275		1-5/8	50	250
3/8 X 3	WA38300	WAMG38300		1-7/8	50	250
3/8 X 3-1/2	WA38350	WAMG38350		2-1/2	50	250
3/8 X 3-3/4	WA38375	WAMG38375		2-5/8	50	250
3/8 X 5	WA38500	WAMG38500		3-7/8	50	200
3/8 X 7	WA38700	WAMG38700		5-7/8	50	200
1/2 X 2-3/4	WA50275	WAMG50275		1/2"	1-5/16	25
1/2 X 3-3/4	WA50375	WAMG50375	2-5/16		25	125
1/2 X 4-1/4	WA50425	WAMG50425	2-13/16		25	100
1/2 X 5-1/2	WA50550	WAMG50550	4-1/16		25	100
1/2 X 7	WA50700	WAMG50700	4-9/16		25	100
1/2 X 8-1/2	WA50850	WAMG50850	6		25	50
1/2 X 10	WA50910	WAMG50910	6		25	50
1/2 X 12	WA50912	WAMG50912	6		25	50
5/8 X 3-1/2	WA62350	WAMG62350	5/8"	1-7/8	20	80
5/8 X 4-1/2	WA62450	WAMG62450		2-7/8	20	80
5/8 X 5	WA62500	WAMG62500		3-3/8	20	80
5/8 X 6	WA62600	WAMG62600		4-3/8	20	80
5/8 X 7	WA62700	WAMG62700		5-3/8	20	80
5/8 X 8-1/2	WA62850	WAMG62850		6	20	40
5/8 X 10	WA62910	WAMG62910		6	10	20
5/8 X 12	WA62912	WAMG62912		6	10	20
3/4 X 4-1/4	WA75425	WAMG75425	3/4"	2-3/8	10	40
3/4 X 4-3/4	WA75475	WAMG75475		2-7/8	10	40
3/4 X 5-1/2	WA75550	WAMG75550		3-5/8	10	40
3/4 X 6-1/4	WA75625	WAMG75625		4-3/8	10	40
3/4 X 7	WA75700	WAMG75700		5-1/8	10	40
3/4 X 8-1/2	WA75850	WAMG75850		6	10	20
3/4 X 10	WA75910	WAMG75910		6	10	20
3/4 X 12	WA75912	WAMG75912		6	5	10
7/8 X 6	WA87600	WAMG87600	7/8"	2-1/8	5	20
7/8 X 8	WA87800	WAMG87800		2-1/8	5	10
7/8 X 10	WA87910	WAMG87910		2-1/8	5	10
7/8 X 12	WA87912	WAMG87912		2-1/8	5	10
1 X 6	WA97600	WAMG97600	1"	2-1/4	5	20
1 X 9	WA97900	WAMG97900		2-1/4	5	10
1 X 12	WA97912	WAMG97912		2-1/4	5	10
1-1/4 X 9	WA98900	WAMG98900	1-1/4"	2-3/4	5	10
1-1/4 X 12	WA98912	WAMG98912		2-3/4	5	10
1-1/4 X 9	WA98900	WAMG98900	1-1/4"	2-3/4	5	10
1-1/4 X 12	WA98912	WAMG98912		2-3/4	5	10



### Installation Sequence



### Tie-Wire Installation Sequence





**Type .304/.303 & Type .316 Stainless Steel Wedge anchors**

Size (in)	304/303 Stainless Steel	.316 Stainless Steel	Drill Bit Dia. (in)	Thread Length	Quantity	
					Box	Carton
1/4 X 1-3/4	WASS25175	—	1/4	15/16	100	500
1/4 X 2-1/4	WASS25225	WASS25225316		1-7/16	100	500
1/4 X 3-1/4	WASS25325	—		2-7/16	100	500
3/8 X 2-1/4	WASS38225	—	3/8	1-1/8	50	250
3/8 X 2-3/4	WASS38275	WASS38275316		1-5/8	50	250
3/8 X 3	WASS38300	—		1-7/8	50	250
3/8 X 3-1/2	WASS38350	—		2-1/2	50	250
3/8 X 3-3/4	WASS38375	WASS38375316		2-5/8	50	250
3/8 X 5	WASS38500	WASS38500316		3-7/8	50	200
3/8 X 7	WASS38700	—		5-7/8	50	200
1/2 X 2-3/4	WASS50275	—	1/2	1-5/16	25	125
1/2 X 3-3/4	WASS50375	—		2-5/16	25	125
1/2 X 4-1/4	WASS50425	—		2-13/16	25	100
1/2 X 5-1/2	WASS50550	WASS50550316		4-1/16	25	100
1/2 X 7	WASS50700	—		5-9/16	25	100
1/2 X 8-1/2	WASS50850	—		2	25	50
1/2 X 10	WASS50910	—		2	25	50
1/2 X 12	WASS50912	—		2	25	50
5/8 X 3-1/2	WASS62350	—	5/8	1-7/8	20	80
5/8 X 4-1/2	WASS62450	—		2-7/8	20	80
5/8 X 5	WASS62500	WASS62500316		3-3/8	20	80
5/8 X 6	WASS62600	WASS62600316		4-3/8	20	80
5/8 X 7	WASS62700	—		5-3/8	20	80
5/8 X 8-1/2	WASS62850	—		2	20	40
5/8 X 10	WASS62910	—		2	10	20
5/8 X 12	WASS62912	—		2	10	20
3/4 X 4-1/4	WASS75425	—	3/4	2-3/8	10	40
3/4 X 4-3/4	WASS75475	—		2-7/8	10	40
3/4 X 5-1/2	WASS75550	—		3-5/8	10	40
3/4 X 6-1/4	WASS75625	—		4-3/8	10	40
3/4 X 7	WASS75700	—		5-1/8	10	40
3/4 X 8-1/2	WASS75850	—		2-1/4	10	20
3/4 X 10	WASS75910	—		2-1/4	10	20
3/4 X 12	WASS75912	—		2-1/4	5	10
7/8 X 6	WASS87600	—	7/8	2-1/8	5	20
7/8 X 8	WASS87800	—		2-1/8	5	10
7/8 X 10	WASS87910	—		2-1/8	5	10
7/8 X 12	WASS87912	—		2-1/8	5	10
1 X 6	WASS9706	—	1	2-1/4	5	20
1 X 9	WASS97909	—		2-1/4	5	10
1 X 12	WASS97912	—		2-1/4	5	10
1-1/4 X 9	WASS98900	—	1-1/4	2-3/4	5	10
1-1/4 X 12	WASS98912	—		2-3/4	5	10

1. Anchors with the 'SS' suffix are Type 303 or 304 Stainless Steel and may require additional lead-time.
2. The published length is the overall length of the anchor. Allow one anchor diameter for the nut and washer thickness plus the fixture thickness when selecting a length.
3. Special lengths are available upon request.
4. Load Values are valid as long as minimum embedment depths are satisfied.

## Zinc Plated Carbon Steel Sleeve Anchors

Size (in)	Zinc	.304 Stainless Steel	Head Style	Bolt Dia. Threads Per Inch	Quantity		
					Box	Carton	
1/4 X 1-3/8	SLAN25138	—	Acorn Head	3/16 - 24	100	500	
1/4 X 2-1/4	SLAN25225	—			100	500	
1/4 X 1-3/8	—	SLH25138SS			100	500	
1/4 X 2-1/4	—	SLH25225SS			50	250	
5/16 X 1-1/2*	SLH31150	SLH31150SS	Hex Head	1/4-20	50	200	
5/16 X 2-1/2	SLH31250	—			25	100	
3/8 X 1-7/8	SLH38187	SLH38187SS	Hex Head	5/16-18	25	100	
3/8 X 3	SLH38300	SLH38300SS			50	200	
3/8 X 4	SLH38400	—			50	200	
1/2 X 2-1/4*	SLH50225	—	Hex Head	3/8-16	50	200	
1/2 X 3	SLH50300	SLH50300SS			25	100	
1/2 X 4	SLH50400	SLH50400SS			25	100	
1/2 X 6	SLH50600	—			20	80	
5/8 X 2-1/4*	SLH62225	—	Hex Head	1/2-13	10	40	
5/8 X 3	SLH62300	—			10	40	
5/8 X 4-1/4	SLH62425	—			10	40	
5/8 X 6	SLH-62600	—			10	40	
3/4 X 2-1/2*	SLH75250	—	Hex Head	5/8-11	10	40	
3/4 X 4-1/4	SLH75425	—			10	40	
3/4 X 6-1/4	SLH75625	—			5	20	
1/4 X 2	SLPF25200	—	Phillips Flat Head	3/16-24	100	500	
1/4 X 2-1/4	—	SLPF25225SS			100	500	
1/4 X 3	SLPF25300	—			50	250	
5/16 X 2-1/2	SLPF31250	—		1/4-20	50	250	
5/16 X 3-1/2	SLPF31350	—			50	250	
3/8 X 2-3/4	SLPF38275	—		Phillips Flat Head	5/16-18	50	200
3/8 X 3	—	SLPF38300SS				50	200
3/8 X 4	SLPF38400	SLPF38400SS				50	200
3/8 X 5	SLPF38500	SLPF38500SS				50	200
3/8 X 6	—	SLRH38600SS	50			200	
1/4 X 3	—	SLRH25300SS	100			500	

\*These models do not meet minimum embedment requirements for rated load values.



## AT3G™ – High-Strength Hybrid Acrylic Adhesive.



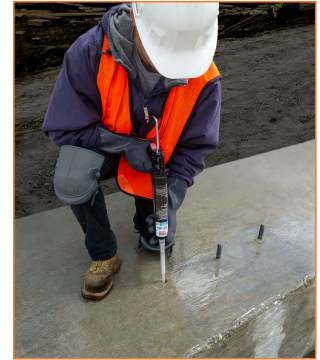
AT3G10

### AT Cartridge System

Part Number	Capacity (ounces)	Cartridge Type	Carton Quantity	Suggested Dispensing Tool	Includes Mixing Nozzle
AT3G10	9.5	single	6	CDT10S	AMN19Q



AMN19Q Mixing Nozzle - included with each cartridge



## SET3G™ & SET-XP® – High-Strength Epoxy Adhesive



SET3G10



SET3G22



SET3G56



SETXP10



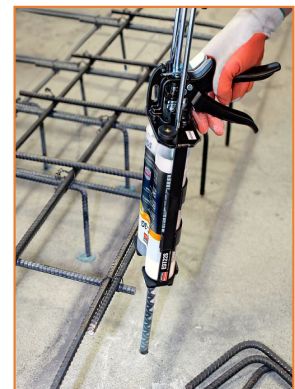
SETXP22



SETXP56

### SET / SETXP Cartridge Systems

Part Number	Capacity (ounces)	Cartridge Type	Carton Quantity	Suggested Dispensing Tool	Recommended Mixing Nozzle
SET3G10	8.5	single	12	CDT10S	EMN22i
SETXP10	8.5	single	12	CDT10S	
SET3G22	22	side-by-side	10	EDT22S, EDTA22P, EDTA22CKT	
SETXP22	22	side-by-side	10	EDT22S, EDTA22P, EDTA22CKT	
SET3G56	56	side-by-side	6	EDTA56P	
SETXP56	56	side-by-side	6	EDTA56P	



### Adesive Mixing Nozzle

Part Number	Part Number	Qty/Pk/Cs
EMN22i-RP5	Mixing Nozzle for SET / SETXP	5/pk - 30/cs
EMN22i-RP10		10/pk - 30/cs



EMN22i

# ET-HP® – Epoxy Adhesive



**ET-HP22**

## ET-HP Cartridge Systems

Part Number	Capacity (ounces)	Cartridge Type	Carton Quantity	Suggested Dispensing Tool	Recommended Mixing Nozzle
ET-HP22	22	side-by-side	10	EDT22S or EDTA22P	EMN22i



**EMN22i Mixing Nozzle** - included with each cartridge

## Dispensing Tools



**CDT10S**  
Manual



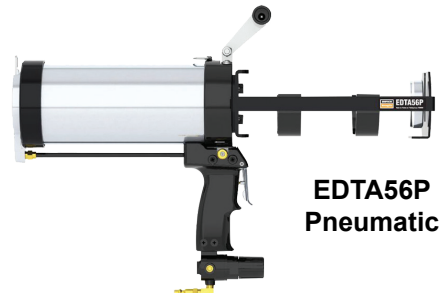
**EDTA22P**  
Pneumatic



**EDT22S**  
Manual



**EDTA22CKT**  
Battery Powered



**EDTA56P**  
Pneumatic

## Hole Cleaning Brushes

### Hole Cleaning Brushes

Brushes are used for cleaning drilled holes prior to adhesive anchor installation. Brushes have a twisted wire handle with nylon bristles.



## Hole Cleaning Brushes

Description	Part Number	For Hole Diameter (in.)
1/2" dia X 3" brush (8" total length)	<b>ETB4</b>	1/4"-9/16"
3/4" X 4" brush (16" total length)	<b>ETB6</b>	5/8"-15/16"
1" X 4" brush (16" total length)	<b>ETB8</b>	1" - 1-1/16"
1-1/4" X 4" brush (29" total length)	<b>ETB10</b>	1-1/4" - 1-5/8"

## Opti-Mesh Adhesive Anchoring Screen Tubes



Screen tube installed in a hollow CMU block. The extra collar of adhesive created by the open mesh collar results in increased bearing area and higher load values. The typical screen relies on the bond between the relatively small amount of adhesive in contact with the face shell of the block for its holding power.



**AT**  
Acrylic Adhesive  
Screen Tube  
(mesh is white)



The integral cap centers the rod and displays drill bit and rod diameter.



**SET, SET-XP, ET-HP**  
Epoxy Adhesive  
Screen Tube  
(mesh is black)

### Plastic Screens - Acrylic-Tie(AT) Epoxy-Tie(ET)

Rod Dia. (in)	Hole Size (in)	Actual Screen Size O.D./Length (in)	Part Number	Carton Qty.
3/8	9/16	17/32 X 6	<b>ATSP3706</b>	150
		17/32 x 10	<b>ETSP3710</b>	100
1/2	3/4	23/32 X 3	<b>ETPS5003</b>	100
		23/32 X 3	<b>ATSP5003</b>	100
		23/32 X 6	<b>ATSP5006</b>	100
5/8	7/8	27/32 X 6	<b>ATSP6206</b>	50
		27/32 X 10	<b>ETSP6210</b>	25
3/4	1	31/32 X 8	<b>ATSP7508</b>	25
		31/32 X 17	<b>ETSP7517</b>	25



**Steel/Stainless Steel Wire Mesh Screens**  
Acrylic-Tie (AT) Epoxy-Tie (ET)

Rod Dia. (in)	Hole Size (in)	Actual Screen Size O.D./Length (in)	Part Number	Carton Qty.
3/8	9/16	15/32 X 6	<b>ETS3706</b>	150
1/2	11/16	19/32 X 6	<b>ETS5006</b>	100
		19/32 X 10	<b>ETS5010</b>	50
5/8	7/8	25/32 X 10	<b>ETS6210</b>	25
		25/32 X 13	<b>ETS6213</b>	25
3/4	1	31/32 X 13	<b>ETS7513</b>	25
		31/32 X 17	<b>ETS7517</b>	25

## Threaded Rod - Carbon Steel



Size	Length	ASTM A307 Zinc Plated	ASTM A193 B7 Plain	Hot Dipped Galvanized	.304 Stainless Steel	.316 Stainless Steel
1/4-20	6 FT	TRZ2520-06	TRB72502-06	TRG2520-06	TRSS2520-06	NA
	10 FT	TRZ2520-10	NA	NA	NA	NA
	12 FT	TRZ2520-12	TRB72520-12	TRG2520-12	TRSS2520-12	NA
5/16-18	6 FT	TRZ3118-06	TRB73118-06	TRG3118-06	TRSS3118-06	NA
	12 FT	TRZ3118-12	TRB73118-12	TRG3118-12	TRSS3118-12	NA
3/8-16	6 FT	TRZ3816-06	TRB73816-06	TRG3816-06	TRSS3816-06	TRST3816-06
	10 FT	TRZ3816-10	NA	NA	NA	NA
	12 FT	TRZ3816-12	TRB73816-12	TRG3816-12	TRSS3816-12	TRST3816-12
1/2-13	6 FT	TRZ5013-06	TRB75013-06	TRG5013-06	TRSS5013-06	TRST5013-06
	10 FT	TRZ5013-10	NA	NA	NA	NA
	12 FT	TRZ5013-12	TRB75013-12	TRG5013-12	TRSS5013-12	TRST5013-12
5/8-11	6 FT	TRZ6211-06	TRB76211-06	TRG6211-06	TRSS6211-06	TRST6211-06
	10 FT	TRZ6211-10	NA	NA	NA	NA
	12 FT	TRZ6211-12	TRB76211-12	TRG6211-12	TRSS6211-12	TRST6211-12
3/4-10	6 FT	TRZ7510-06	TRB7510-06	TRG7510-06	TRSS7510-06	TRST7510-06
	10 FT	TRZ7510-10	NA	NA	NA	NA
	12 FT	TRZ7510-12	TRB7510-12	TRG7510-12	TRSS7510-12	TRST7510-12
7/8-9	6 FT	TRZ8709-06	TRB78709-06	TRG8709-06	TRSS8709-06	TRST8709-06
	10 FT	TRZ8709-10	NA	NA	NA	NA
	12 FT	TRZ8709-12	TRB78709-12	TRG8709-12	TRSS8709-12	NA
1-08	6 FT	TRZ910008-06	TRB7910008-06	TRG910008-06	TRSS910008-06	NA
	10 FT	TRZ910008-10	NA	NA	NA	NA
	12 FT	TRZ910008-12	TRB7910008-12	TRG9100-12	TRSS91008-12	NA
1-1/4-07	6 FT	TRZ912507-06	TRB79125-06	TRG912507-06	TRSS9125-06	NA
	10 FT	TRZ912507-10	NA	NA	NA	NA
	12 FT	TRZ912507-12	TRB7912507-12	TRG912507-12	NA	NA

### Threaded Rod - ASTM F1554 - GR 36

Size	Length	Zinc Plated	Plain	Hot Dipped Galvanized
3/8-16	12 FT	TR36Z-3816-12	NA	NA
1/2-13	12 FT	TR36Z-5013-12	NA	NA
3/4-10	12 FT	NA	TR36PL-7510-12	TR36G-7510-12
7/8-09	12 FT	NA	TR36PL-8709-12	NA
1-08	12 FT	NA	TR36PL-910008-12	NA

### Threaded Rod - ASTM F1554 - GR 55

Size	Length	Plain	Hot Dipped Galvanized
1/2-13	12 FT	TR55PL-5013-12	TR55G-5013-12
5/8-11	12 FT	TR55PL-6211-12	TR55G-6211-12
3/4-10	12 FT	TR55PL-7510-12	TR55G-7510-12
7/8-09	12 FT	TR55PL8709-12	TR55G-8709-12
1-08	12 FT	TR55PL-910008-12	TR55G-910008-12
1-1/2-06	12 FT	TR55PL-915006-12	N/A

Above items may be cut to custom length upon request

# SAMMYS™



## Wood Sammys



Rod Size	Screw Description	Part Number
1/4"	1/4 X 1	<b>SAMGST100</b>
	1/4 X 2	<b>SAMGST200</b>
3/8"	1/4 X 1	<b>SAMGST10</b>
	1/4 X 2	<b>SAMGST20</b>
	3/8 X 2-1/2	<b>SAMGST25-380</b>
	1/4 X 3	<b>SAMGST30</b>
1/2"	1/4 X 2	<b>SAMGST2</b>
	1/4 X 3	<b>SAMGST3</b>

## Steel Sammys



Rod Size	Screw Description	Part Number
1/4"	1/4-14 X 1 TEK 3	<b>SAMDST100</b>
	1/4-14 X 1-1/2 TEK 3	<b>SAMDST150</b>
3/8"	12-24 X 1-1/2 TEK 5	<b>SAMDSTR1-1/2</b>
	1/4-20 X 1 TEK 3	<b>SAMDSTR1</b>
	5/16-18 X 1-1/4 TEK 3	<b>SAMDSTR516(38)</b>
	1/4-14 X 1 TEK 3	<b>SAMDST10</b>
	1/4-12 X 1-1/2 TEK 3	<b>SAMDST15</b>
	1/4-14 X 2 TEK 3	<b>SAMDST20</b>
	1/4-14 X 3 TEK 3	<b>SAMDST30</b>
1/2"	12-24 X 1-1/2 TEK 5	<b>SAMTEK50</b>
	12-24 X 1-1/2 TEK 5	<b>SAMTEK5.0</b>

## Concrete Sammys



Rod Size	Screw Description	Part Number
1/4"	5/16 X 1-1/2	<b>SAMCST200</b>
3/8"	5/16 X 1-1/2	<b>SAMCST20</b>
1/2"	5/16 X 1-1/2	<b>SAMCST2</b>

**NOTE: Most Items Available in Stainless Steel, Box Quantity - 25, Case Quantity - 125**

## Speedy Pole Tool and Drivers

Description	Part No.
12' (4'-12') Speedy Pole Tool (8124910)	<b>SAMSP4</b>
18' (6'-18') Speedy Pole Tool (8125910)	<b>SAMSP6</b>
Sammy Socket Driver (8127910)	<b>SAM0138</b>
Ceiling Wire Socket Driver (8128910)	<b>SAM3004</b>

The Pole Tool and Universal Socket Kit provide easy and safe installation for:

- |                     |            |
|---------------------|------------|
| Sammys Threaded Rod | Jack Chain |
| Pencil Rod          | Wire       |
| Ceiling Screws      | Screws     |



## Universal Installation Kit

- Includes:
- Adaptor Plug
  - Socket Driver for Sammy Super Screws
  - Socket Driver for Ceiling Wire Screws
  - Socket Driver for 1/4" Standard Nut Drivers
  - Stud Plug for Viper or Ladd Powder Actuated Attachment



Part # **SAM3008**

## Concrete/Wood Installation Kit

Use for installing SAMMYS and Sidewinders into concrete or extremely hard wood.

- Includes:
- |               |                   |
|---------------|-------------------|
| 1/4" Bit      | 1/4" Bit Receiver |
| 1/4" SDS Bit  | Nut Driver        |
| 7/32 Wood Bit | SW Nut Driver     |
| SL 250 Sleeve |                   |



Part # **SAM3009**

©2003 Illinois Tool Works, Inc. Sammys™, Sammy Super Screw®, Speedy Pole Tool™, Sammy Swivel Head™, Sammy X-Press™, Sammy X-Press It™, Sidewinders™, Tekes®, and Building Ideas that Work® are trademarks of ITW Buildex and Illinois Tool Works Inc.



## Wood Sidewinder



Rod Size (inches)	Screw Description	Part Number
3/8	1/4 X 1	<b>SAMSWG10</b>
	1/4 X 2	<b>SAMSWG20</b>
	3/8 X 2-1/2	<b>SAMSWG25-380</b>
	1/4 X 3	<b>SAMSWG30</b>

## Steel Sidewinder



Rod Size (inches)	Screw Description	Part Number
3/8	1/4-14 X 1 TEKS 3	<b>SAMSW10</b>
	1/4-20 X 1 TEKS 3	<b>SAMSWR1</b>



### Nut Driver

Use #14SW Nut Driver for Sidewinders and 1/2" Rod Sammys

Part #**SAM14SW**



### Nut Driver

Use #14 Nut Driver for Sammys and Swivel Head

Part #**SAM14SH**



## Concrete Sidewinder

Rod Size (inches)	Screw Description	Part Number
3/8	5/16 X 1-1/2	<b>SAMSWC20</b>

**NOTE: Most Items Available in Stainless Steel**

## Sammy Swivel Head for Wood

Screw Description	Part Number
1/4 X 2	<b>SAMSHGST20</b>

## Sammy Swivel Head for Steel

1/4-20 X 1	<b>SAMSHDSTR1</b>
------------	-------------------

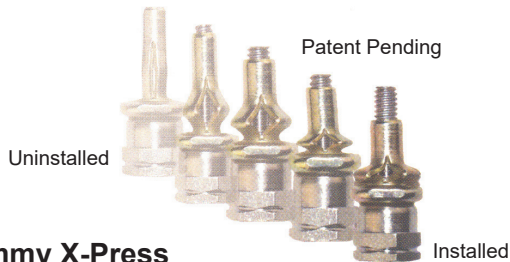


Use with 3/8" rod  
17° deflection from vertical  
Accommodates up to 3-1/2 X 12 pitch roof  
Also available in stainless steel

Use #14 Nut Driver (black)

U.S. Patent No.  
6,443,680

## Hang Threaded Rod Directly from Thin Gauge Metal Deck & Purlin



### Sammy X-Press

Screw Description	Part Number	Steel Ga.
1/4-20 X 1-1/8 Sammy X-Press 20	<b>SAMXP20</b>	22-20
1/4-20 X 1-1/8 Sammy X-Press 35	<b>SAMXP35</b>	18-16

**Box Quantity 25**  
**Case Quantity 125**

Patent Pending



Installation Tool

### Sammy X-Press Tools

Tool Description	Part No.
Sammy X-Press It Installation Tool*	<b>SAMXPIT</b>
25/64" Drill Bit	<b>SAMXPDB</b>

\*Kit Includes: Sleeve, Bit Receiver, Hex Wrench, and 25/64" Drill Bit



Drop-In (No Lip)

**D**rop-in anchors are internally threaded expansion anchors with a preassembled expander plug, suitable for flush mount applications in solid base materials. The anchor is set by driving the expansion plug towards the bottom of the anchor using the setting tool. Drop-in anchors are also available in coil-threaded versions for 1/2" and 3/4" coil threaded rod.

The 3/8" Short Drop-In Anchor (DIA37S) is an internally threaded drop-in anchor for use in solid and hollow concrete. The short length permits shallow embedment, thus avoiding drilling into rebar or prestressing strands. The wide surface flange allows the DIA37S to be installed in deep or bottomless holes.

**Drop-In (No Lip) Product Data - Carbon and Stainless Steel**

Rod Size (in)	Carbon Steel Part Number	304 Stainless Part Number	Drill Bit Diameter (in.)	Bolt Threads (per in.)	Body Length	Quantity	
						Box	Carton
1/4	<b>DIA25</b>	<b>DIASS25</b>	3/8	20	1	100	500
3/8	<b>DIA37</b>	<b>DIASS37</b>	1/2	16	1-1/2	50	250
1/2	<b>DIA50</b>	<b>DIASS50</b>	5/8	13	2	50	200
5/8	<b>DIA62</b>	<b>DIASS62</b>	7/8	11	2-1/2	25	100
3/4	<b>DIA75</b>	—	1	10	3-1/8	20	80



Lipped Drop-In

**Lipped Drop-In Product Data - Carbon and Stainless Steel**

Rod Size (in)	Carbon Steel Part Number	Drill Bit Diameter (in.)	Bolt Threads (per in.)	Body Length	Quantity	
					Box	Carton
1/4	<b>DIAL25</b>	3/8	20	1	100	500
3/8	<b>DIAL37</b>	1/2	16	1-1/2	50	250
1/2	<b>DIAL50</b>	5/8	13	2	50	200



Coil Thread Drop-In

**Coil Thread Drop-In Product Data**

Rod Size (in)	Carbon Steel Part Number	Drill Bit Diameter (in.)	Bolt Threads (per in.)	Body Length	Quantity	
					Box	Carton
1/2	<b>F2-DIACT50*</b>	5/8	6	2	50	200
3/4	<b>F2-DIACT75*</b>	1	5	3-1/8	20	80

\* DIACT50 and DIACT75 accept 1/2" and 3/4" coil thread rod, respectively.

Standard Setting Tool

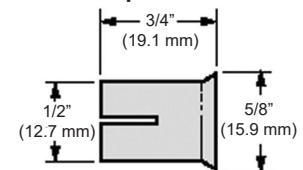


**Drop-In Setting Tool Product Data**

Part Number	For Use With	Box Qty.
<b>DIAS25</b>	DIA25	10
<b>DIAS37</b>	DIA37	10
<b>DIAS50</b>	DIA50, DIA50C	10
<b>DIAS62</b>	DIA62	5
<b>DIAS75</b>	DIA75, DIA75C	5

1. Setting Tools sold separately except for DIA37S

**Short Drop-In Dimensions**



Short Drop-In



**Short Drop-In Product Data**

Rod Size (in)	Carbon Steel Part Number	Drill Bit Diameter (in.)	Bolt Threads (per in.)	Body Length	Quantity	
					Box	Carton
3/8	<b>DIA37S*</b>	1/2	16	3/4	100	500
1/2	<b>DIA50S</b>	5/8	13	1	50	200

\* A dedicated setting tool is included with each box of DIA37S

# Hollow-Set™ Dropin



**BASE MATERIAL:** Concrete, Block, Brick, Pre-cast Hollow Core Plank, Stone  
**SIZE RANGE:** 1/4" to 5/8"  
**ANCHOR MATERIAL:** Zamac Alloy with Carbon Steel or Stainless Steel Cones

The Hollow-Set™ Dropin anchor is designed for anchoring in hollow base materials such as hollow concrete block, brick with weep holes and hollow core pre-cast concrete plank. It can also be used in solid base materials. Hollow masonry materials often have a minimum outer wall thickness of 1-1/2". During the drilling process, spalling on the back side of the wall often decreases the wall thickness available for anchoring to 1" or less. The design of the Hollow-Set™ Dropin overcomes this problem.

## Carbon Steel Hollow-Set™ Dropin Product Data

Part Number	Size	Drill Dia.	Overall Length	Sleeve Length	Std. Box	Std. Ctn.
P9320	1/4"	3/8"	7/8"	5/8"	100	1000
P9330	5/16"	5/8"	1-5/16"	15/16"	50	500
P9340	3/8"	5/8"	1-5/16"	15/16"	50	500
P9350	1/2"	3/4"	1-3/4"	1-1/4"	50	250

## Setting Tools for Hollow Base Materials Product Data

Part Number	Size	Std. Box
P9323	1/4"	1
P9342	5/16"	1
P9343	3/8"	1
P9353	1/2"	1

**AVAILABLE MATERIALS:** Zinc diecast alloy  
**APPROVALS/LISTINGS:** G.S.A. Spec FF-S-325C, Group II, Type 2, Class I  
**INSTALLATION:**

1. Drill hole to at least shield length. Clean hole of debris.
2. Place Forway in the hole.
3. Position equipment. Insert machine bolt through equipment into shield. Tighten.



### For hanger rod installation:

1. Thread a hex nut onto the hanger rod, then screw the Forway against the washer.
2. Place the Forway in the hole.
3. Pull on the rod to preset the Forway.
4. Expand the Forway by tightening the hex nut against the surface of the base material.

### Features:

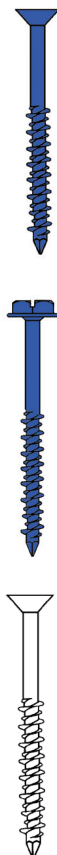
- Medium to heavy loads
- Can be used in dead, variable, or vibratory conditions in all types of solid or hollow masonry materials
- Four-way expansion assures positive anchoring even under adverse drilling conditions

## Forway® Product Data

Part Number	Bolt Dia.	Hole Dia.	Shield Length	Ultimate Loads in Lbs.*		Tension Block	Box Qty.	Master Qty.
				Tension	Shear			
FOR25	1/4"	1/2"	1-1/4"	2320	2100	1925	100	800
FOR38	3/8"	11/16"	1-3/4"	3640	3850	2440	50	400
FOR50	1/2"	7/8"	2-1/4"	5100	8100	3050	50	150

Concrete masonry anchors cut threads into concrete, brick and hollow block.

### Concrete Masonry Fasteners



Description	Part Number			Drill bit	Fixture Thickness	Common Applications	
	PFH BLUE	HWH BLUE	PFH WHITE				
3/16 X 1-1/4	<b>CMSPFHB19125</b>	<b>CMSHWB19125</b>	<b>CMSPFHW19125</b>	5/32 X 3-1/2	1-1/4	Mounting brackets; control panels; cable clamps, conduit clips, junction switch and control boxes	
1/4 X 1-1/4	<b>CMSPFHB25125</b>	<b>CMSHWB25125</b>	<b>CMSPFHW25125</b>	3/16 X 3-1/2			
3/16 X 1-3/4	<b>CMSPFHB19175</b>	<b>CMSHWB19175</b>	<b>CMSPFHW19175</b>	5/32 X 3-1/2	1/4-3/4	1/2" or 3/4" plywood backer boards; mounting brackets, control panels; cable clamps; conduit clips, junction switch and control box meters	
1/4 X 1-3/4	<b>CMSPFHB25175</b>	<b>CMSHWB25175</b>	<b>CMSPFHW25175</b>	3/16 X 3-1/2			
3/16 X 2-1/4	<b>CMSPFHB19225</b>	<b>CMSHWB19225</b>	<b>CMSPFHW19225</b>	5/32 X 4-1/2	3/4 - 1-1/4	1 X 2 wood furring; 3/4" plywood backer boards; metal safety grating	
1/4 X 2-1/4	<b>CMSPFHB25225</b>	<b>CMSHWB25225</b>	<b>CMSPFHW25225</b>	3/16 X 4-1/2			
3/16 X 2-3/4	<b>CMSPFHB19275</b>	<b>CMSHWB19275</b>	<b>CMSPFHW19275</b>	5/32 X 4-1/2	1-1/4 - 1-3/4	2 X 4 wood nailers	
1/4 X 2-3/4	<b>CMSPFHB25275</b>	<b>CMSHWB25275</b>	<b>CMSPFHW25275</b>	3/16 X 4-1/2			
3/16 X 3-1/4	<b>CMSPFHB19325</b>	<b>CMSHWB19325</b>	<b>CMSPFHW19325</b>	5/32 X 5-1/2	1-3/4 - 2-1/4	Sill plates; 2 pieces of 2 X 4 or 2 X 6 to masonry, insulation to masonry	
1/4 X 3-1/4	<b>CMSPFHB25325</b>	<b>CMSHWB25325</b>	<b>CMSPFHW25325</b>	3/16 X 5-1/2			
3/16 X 3-3/4	<b>CMSPFHB19375</b>	<b>CMSHWB19375</b>	<b>CMSPFHW19375</b>	5/32 X 5-1/2	2-1/4 - 2-3/4		
1/4 X 3-3/4	<b>CMSPFHB25375</b>	<b>CMSHWB25375</b>	<b>CMSPFHW25375</b>	3/16 X 5-1/2			
3/16 X 4	<b>CMSPFHB19400</b>	<b>CMSHWB19400</b>	—	5/32 X 5-1/2	2-1/2 - 3		
1/4 X 4	<b>CMSPFHB25400</b>	<b>CMSHWB25400</b>	—	3/16 X 5-1/2			
1/4 X 5	<b>CMSPFHB25500</b>	<b>CMSHWB25500</b>	—	3/16 X 6-1/2	3-1/4 - 4		
1/4 X 6	<b>CMSPFHB25600</b>	<b>CMSHWB25600</b>	—	3/16 X 7-1/2	4-1/4 - 5		
Description	Part Number (.410 Stainless Steel)			Drill bit	Fixture Thickness		Common Applications
	PFH SS	HWH SS					
3/16 X 1-1/4	—	<b>CMSHWSS19125</b>	—	5/32 X 3-1/2	1-1/4	Mounting brackets; control panels; cable clamps, conduit clips, junction switch and control boxes	
1/4 X 1-1/4	<b>CMSPFHSS25125</b>	<b>CMSHWSS25125</b>	—	3/16 X 3-1/2			
3/16 X 1-3/4	<b>CMSPFHSS19175</b>	—	—	5/32 X 3-1/2	1/4-3/4	1/2" or 3/4" plywood backer boards; mounting brackets, control panels; cable clamps; conduit clips, junction switch and control box meters	
1/4 X 1-3/4	<b>CMSPFHSS25175</b>	<b>CMSHWSS25175</b>	—	3/16 X 3-1/2			
3/16 X 2-1/4	<b>CMSPFHSS19225</b>	—	—	5/32 X 4-1/2	3/4 - 1-1/4	1 X 2 wood furring; 3/4" plywood backer boards; metal safety grating	
1/4 X 2-1/4	<b>CMSPFHSS25225</b>	<b>CMSHWSS25225</b>	—	3/16 X 4-1/2			
3/16 X 2-3/4	—	—	—	5/32 X 4-1/2	1-1/4 - 1-3/4	2 X 4 wood nailers	
1/4 X 2-3/4	<b>CMSPFHSS25275</b>	<b>CMSHWSS25275</b>	—	3/16 X 4-1/2			
3/16 X 3-1/4	—	—	—	5/32 X 5-1/2	1-3/4 - 2-1/4	Sill plates; 2 pieces of 2 X 4 or 2 X 6 to masonry, insulation to masonry	
1/4 X 3-1/4	<b>CMSPFHSS25325</b>	<b>CMSHWSS25325</b>	—	3/16 X 5-1/2			
3/16 X 3-3/4	—	—	—	5/32 X 5-1/2	2-1/4 - 2-3/4		
1/4 X 3-3/4	<b>CMSPFHSS25375</b>	<b>CMSHWSS25375</b>	—	3/16 X 5-1/2			
3/16 X 4	—	—	—	5/32 X 5-1/2	2-1/2 - 3		
1/4 X 4	<b>CMSPFHSS25400</b>	<b>CMSHWB25400</b>	—	3/16 X 5-1/2			

\* Note: The minimum embedment requirement is 1" and the maximum embedment is 1-3/4". One drill bit is provided with every box of 100 pieces.



### Hot Dip Galvanized Concrete Masonry Drive Anchors

Part No.	Length	Box Qty.	Bulk Part No.	Bulk Qty.
<b>PG113</b>	1-1/8	100*	<b>PGB113</b>	1000
<b>PG150</b>	1-1/2		<b>PGB150</b>	
<b>PG200</b>	2		<b>PGB200</b>	
<b>PG250</b>	2-1/2		<b>PGB250</b>	
<b>PG300</b>	3		<b>PGB300</b>	
<b>PG350</b>	3-1/2		<b>PGB350</b>	500
<b>PG400</b>	4		<b>PGB400</b>	
<b>PG450</b>	4-1/2		<b>PGB450</b>	
<b>PG500</b>	5	<b>PGB500</b>		

\*One straight shank bit included in each box of 100, no bit included in bulk quantities.

### Split Drive Anchors - Zinc Plated Carbon Steel

Size (in)	Part Number.	Head Style	Drill Bit Dia. (in.)	Quantity	
				Box	Carton
1/4 X 1-1/2	<b>SDMHZ25150</b>	Mushroom Head	1/4	100	500
1/4 X 2	<b>SDMHZ25200</b>			100	500
1/4 X 2-1/2	<b>SDMHZ25250</b>			100	500
1/4 X 3	<b>SDMHZ25300</b>			100	400
3/8 X 2	<b>SDMHZ38200</b>	Mushroom Head	3/8	25	250
3/8 X 3-1/2	<b>SDHMZ38350</b>			25	150
3/16 X 1-1/2	<b>SDFHZ19150</b>	Flat Head	3/16	100	1000
1/4 X 1-1/2	<b>SDFHZ25150</b>		1/4	100	500
1/4 X 2	<b>SDFHZ25200</b>			100	500
1/4 X 2-1/2	<b>SDFHZ25250</b>			100	500
1/4 X 3	<b>SDFHZ25300</b>			100	400
1/4 X 3-1/2	<b>SDFHZ25350</b>			100	400
1/4 X 4	<b>SDFHZ25400</b>			100	400
1/4 X 3	<b>SDDHZ25300</b>	Duplex Head		1/4	100



(Flat Head)



(Mushroom)



(Duplex)



### ZAMAC Nail-In - Mushroom Head

Size in.	Part# Zinc	Part# Stainless Steel	Drill Bit Dia.	Embed. Depth (in.)	Allowable Tension Load (lbs)	Allowable Shear Load (lbs)	Quantity		
					f'c>3000 psi	f'c>3000 psi	Box	Carton	-Bulk
3/16 X 7/8	<b>NIMHZ19087</b>	—	3/16	3/4	165	120	100	1600	1000
1/4 X 3/4	<b>NIMHZ25075</b>	<b>NIMHZSS25075</b>	1/4	5/8	165	120	100	1600	
1/4 X 1	<b>NIMHZ25100</b>	<b>NIMHZSS25100</b>		7/8	225	225	100	500	
1/4 X 1-1/4	<b>NIMHZ25125</b>	<b>NIMHZSS25125</b>		1	225	225	100	500	
1/4 X 1-1/2	<b>NIMHZ25150</b>	<b>NIMHZSS25150</b>		1-1/4	285	225	100	500	
1/4 X 2	<b>NIMHZ25200</b>	<b>NIMHZSS25200</b>		1-1/2	285	260	100	400	
1/4 X 2-1/2	<b>NIMHZ25250</b>	<b>NIMHZSS25250</b>		2	310	260	100	400	
1/4 X 3	<b>NIMHZ25300</b>	<b>NIMHZSS25300</b>		2-1/2	310	260	100	400	

ZAMAC Nail-In (Mushroom Hd)

#### Installation Sequence



### NYLON Nail-In - Mushroom Head

Part No.	Hole/Anchor Diameter + Length	Head Dia	Finish	Minimum Hole Depth	Minimum Embedment	Ultimate Tensile & Shear Loads in Lbs. Concrete Strength (PSI) 3000 P.S.I.		Box Qty.
						Tension	Shear	
<b>NIMHNZ19100</b>	3/16 X 1	9/16	Zinc	1-1/4"	3/4"	370	687	100
<b>NIMHNSS25100</b>	1/4 X 1	9/16	SS	1-1/4"	3/4"	370	687	100
<b>NIMHNZ25100</b>	1/4 X 1	9/16	Zinc	1-1/4"	3/4"	261	884	100
<b>NIMHNSS25150</b>	1/4 X 1-1/2	9/16	SS	1-3/4"	1"	320	951	100
<b>NIMHNZ25150</b>	1/4 X 1-1/2	9/16	Zinc	1-3/4"	1"	320	951	100
<b>NIMHNZ25200</b>	1/4 X 2	9/16	Zinc	2 -1/4"	1"	253	590	100
<b>NIMHNZ25300</b>	1/4 X 3	9/16	Zinc	3-1/4"	1-1/4"	261	884	100
<b>NIMHNZ25400</b>	1/4 X 4	9/16	Zinc	4-1/4"	1-1/4"	261	884	100



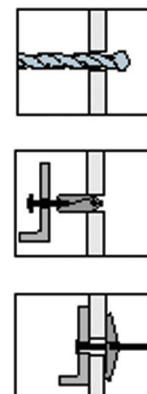
NYLON Nail-In (Mushroom Hd)

### Spring Wing Toggle Only



Fits Size (Dia. - Threads per Inch)	Model No	Quantity		Drill Bit Dia. (in.)	Wing Spread
		Box	Carton		
#6-32 (1/8)	<b>TWZ0632</b>	100	3,250	3/8	1-7/16
#10-24 (3/16)	<b>TWZ1024</b>	100	1,450	1/2	1-7/8
1/4-20	<b>TWZ2520</b>	100	800	11/16	2-1/16
5/16-18	<b>TWZ3118</b>	50	500	7/8	2-3/4
3/8-16	<b>TWZ3816</b>	50	300	1	2-7/8

#### Installation Sequence



# TOGGLER®



**SNAPTOGGLE®**

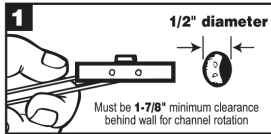
Available in 3/16", 1/4", 3/8", 1/2" bolt sizes

## Hollow Wall Anchors

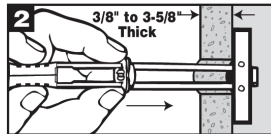
Bolt Size	Grip Range 3/8" - 2-1/2" (9mm-64mm)		Wall Thickness
	Zinc-Plated Steel	304 Stainless	
3/16"-24	<b>STAZ1924</b>	—	3/8" - 3-5/8"
1/4"-20	<b>STAZ2520</b>	<b>STASS2520</b>	3/8" - 3-5/8"
3/8"-16	<b>STAZ3816</b>	<b>STASS3816</b>	3/8" - 2-1/2"
1/2"-13	<b>STAZ5013</b>	<b>STASS5013</b>	3/8" - 2-1/2"
5/16"-18	<b>STAZ3118</b>	—	3/8" - 2-1/2"

BA, BB and BM series use 1/2" dia. hole. BC and BD series use 3/4" dia. hole

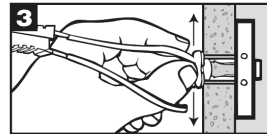
## Installation



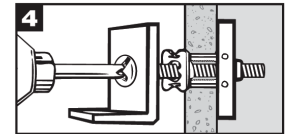
1. Insert in hole



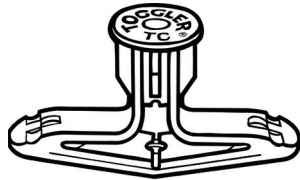
2. Zip cap flush with surface



3. Snap off straps flush with surface.



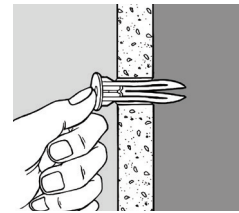
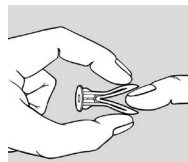
4. Drive screw flush.



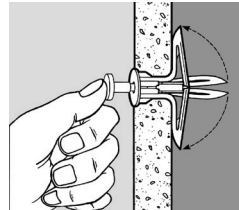
## Plastic Toggle Hollow Wall Anchors

Part Number	Toggle Range
<b>TB100</b>	3/8"-1/2" (9-13mm)
<b>TC100</b>	5/8"-3/4" (16-19mm)
<b>TD50</b>	1" (26mm)
<b>T35</b>	1-3/8" (35mm)
<b>T39</b>	1-1/2" (39mm)

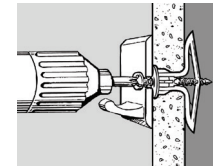
## Installation



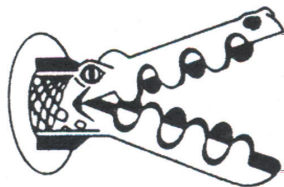
2. Push flush.



3. Toggle open.  
Except in material over toggle range or for light loads.



4. Drive screw flush.

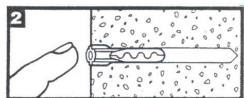
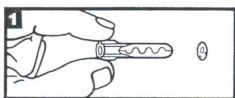


**ALLIGATOR®**

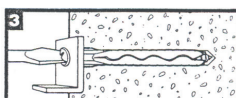
## Solid and Hollow Wall Anchors

Flanged	Flush Mount	Anchor & Drill Dia.	Screw Diameter
<b>AAF19</b>	<b>AA19</b>	3/16" (5mm)	#4-#10 (3-5mm)
<b>AAF25</b>	<b>AA25</b>	1/4" (6mm)	#6-#14 (3.5-6mm)
—	<b>AA31</b>	5/16" (8mm)	#8-#16 (4-8mm)
—	<b>AA38</b>	3/8" (10mm)	#10-3/8" (4.5-10mm)

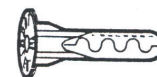
## Installation



1. Make hole.  
Same size as anchor diameter and minimum 1-1/4 times anchor length.
2. Insert anchor.
3. Drive screw flush.



Unflanged Style (AA)  
(Flush Mount)



Flanged Style (AAF)

TOGGLER and typeface, TA, TB, TC, symbol, SNAPTOGGLE, ALLIGATOR, and ALLIGATOR design are registered trademarks of MPC.



**The Original!**  
**Fast and easy self-drilling anchors.**  
**E-Z Ancor Zinc™**  
**E-Z Mini Ancor®,**  
**E-Z Ancor Lite™**  
**E-Z Ancor Plastic Plus™**  
**E-Z Toggle™**



### Self-Drilling Drywall Anchors

	Anchor Description	Anchor Material	Part Number	Maximum Fixture Thickness (in.)	Accommodates Sheet Metal Screw Size
Light Duty	3/8 1-5/16 <i>E-Z Ancor Lite</i>	White Nylon	<b>EZLP</b>	3/4	#6
	7/16 1-1/4 <i>E-Z Mini Ancor</i>	Zinc	<b>EZMM</b>		#6, #7, or #8
Medium Duty	1/2 1-5/8 <i>E-Z Ancor</i>	Zinc	<b>EZM</b>		
Heavy Duty	1/2 1-5/8 <i>E-Z Ancor Plastic Plus</i>	White Nylon	<b>EZP</b>		
	9/16 2-1/2 <i>E-Z Toggle</i>	Zinc	<b>EZT</b> #8 X 2-1/8 Pan SMS	1/2	#8

**HWA** – Hollow Wall Anchors expand inside the wall cavity to provide a large bearing area for transfer of loads.

**HWDA** – Hollow Wall Drive Anchor permits installation in gypsum drywall without pre-drilling.



HWA

HWDA

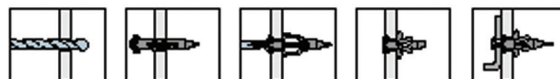
#### HWA - Hollow Wall Anchors

Size (in.)	Part Number	Base Material Thickness (in.)	Drill Bit Dia. (in.)	Quantity	
				Box	Carton
1/8S	<b>HWA13S</b>	1/8 - 1/2	1/4	100	500
1/8L	<b>HWA13L</b>	5/8 - 7/8		100	500
3/16S	<b>HWA19S</b>	1/8 - 1/2	3/8	50	250
3/16L	<b>HWA19L</b>	5/8 - 1-3/16		50	250
1/4S	<b>HWA25S</b>	1/8 - 1/2	1/2	50	250
1/4L	<b>HWA25L</b>	5/8 - 1-3/16		50	250

#### HWDA - Hollow Wall Drive Anchors

Size (in.)	Part Number	Base Material Thickness (in.)	Quantity	
			Box	Carton
1/8SD	<b>HWLD18</b>	1/8 - 1/2	100	500
1/8LD	<b>HWSD18</b>	5/8 - 13/16	100	500

#### Installation Sequence



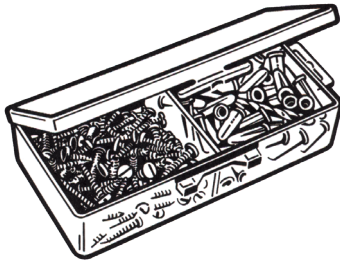


Stocked in Blue



### Conical Anchors

Part Number	Anchor Size	Use With Screws	Drill Size
CPA0608	3/16" X 3/4"	#4, #6, #8	3/16"
CPA0810	3/16" X 7/8"	#6, #8, #10	3/16"
CPA1012	1/4" X 1"	#10, #12	1/4"
CPA1416	5/16" X 1-3/8"	#14, #16	5/16"



### Anchor Kits

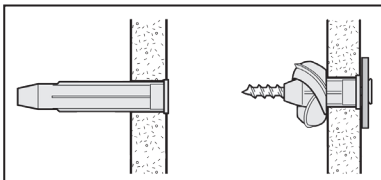
Part Number	Kit Contents
AK19	100 pcs. - 1/4" Conical Anchors 100 pcs. - #8 Combo Screws 1 pc. - 1/4" Slow Spiral Masonry
AK25	100 pcs. - 1/4" Conical Anchors 100 pcs. - #10 Combo Screws 1 pc. - 1/4" Slow Spiral Masonry
AK31	50 pcs. - 5/16" Conical Anchors 50 pcs. - #12 Combo Screws 1 pc. - 5/16" Slow Spiral Masonry



### Light Rosett Anchor

Part Number	Description	Drill Size Required	Qty.
LRA25	Red Light Rosett	1/4"	100
LRA31	Blue Light Rosett	1/4"	50

### Installation Sequence



info@vikingindustrialcenter.com



### Ribbed Anchors

Part Number	Anchor Size	Use With Screws	Drill Size
GRAL316 <i>(Gray with Lip)</i>	3/16" X 7/8"	#4, #6, #8	3/16"
GRAL25 <i>(Gray with Lip)</i>	1/4" X 1"	#8, #10, #12	1/4"
GRAL516 <i>(Gray with Lip)</i>	5/16" X 1-1/4"	#14, #16	5/16"
GRA316NL <i>(Gray without Lip)</i>	3/16" X 7/8"	#4, #6, #8	3/16"
GRA25NL <i>(Gray without Lip)</i>	1/4" X 1"	#8, #10, #12	1/4"

## EXPANDET® SCREW ANCHORS

### Expandet Screw Anchors

Below Items Packed in Frames of 25

Part Number (Frame)	Color & Length	Drill Size Required Plaster & Concrete	Screw or Lag Size Required	Frames of 25 Per Carton	Tension Load (lbs.)*
EXP16100	Yellow 1"	5/32"	#4	20	55
EXP19100	White 1"	3/16"	#6	20	260
EXP19150	White 1-1/2"	3/16"	#6	20	350
EXP23150	Red 1-1/2"	15/64"	#8	20	395
EXP25100	Green 1"	1/4"	#10	20	350
EXP25125	Green 1-1/4"	1/4"	#10	20	440
EXP25150	Green 1-1/2"	1/4"	#10	20	515
EXP25200	Green 2"	1/4"	#10	10	725
EXP31150	Blue 1-1/2"	5/16"	#14 & 1/4" Lag	20	595
EXP31200	Blue 2"	5/16"	#14 & 1/4" Lag	10	770
EXP38150	Orange 1-1/2"	3/8"	#16 & 5/16" Lag	4	530
EXP38200	Orange 2"	3/8"	#16 & 5/16" Lag	4	760
EXP38250	Orange 2-1/2"	3/8"	#16 & 5/16" Lag	4	860
EXP44200	Gray 2"	7/16"	#20 & 3/8" Lag	4	1630
EXP44300	Gray 3"	7/16"	#20 & 3/8" Lag	4	2200

Below Items Packed in Frames of 12

EXP56250	Black 2-1/2"	9/16"	7/16" & 1/2" Lag	4	1985
----------	--------------	-------	------------------	---	------



\* Maximum values in concrete



www.vikingindustrialcenter.com

# NOTES

ORIGINATOR

[Empty box for originator name]



Office (651) 646-6141  
Toll Free (800) 328-6505

9205 Lake Drive NE, Columbus MN 55025

Email: info@vikingindustrialcenter.com

**APPLICATION FOR CREDIT**

Date: \_\_\_\_\_

**COMPANY:** \_\_\_\_\_

Application Requested by: \_\_\_\_\_

**INVOICE TO:**

**SHIP TO:**

(Address/P.O.Box) \_\_\_\_\_

(Street Address) \_\_\_\_\_

(City, State & Zip) \_\_\_\_\_

(City, State & Zip) \_\_\_\_\_

Phone: \_\_\_\_\_ Fax: \_\_\_\_\_

Email: \_\_\_\_\_

Invoice Preference: Fax \_\_\_\_\_ Email \_\_\_\_\_

If your company is Tax Exempt, a copy of the certificate is required.

Years in business: \_\_\_\_\_

Accounts Payble Contact: \_\_\_\_\_

**Trade References:**

**Name of Supplier**

**Phone Number**

**Fax Number** *(required)*

1. \_\_\_\_\_

\_\_\_\_\_

2. \_\_\_\_\_

\_\_\_\_\_

3. \_\_\_\_\_

\_\_\_\_\_

**Bank Reference:**

Name of Bank \_\_\_\_\_

Phone Number \_\_\_\_\_

Contact at Bank \_\_\_\_\_

Account Number \_\_\_\_\_

*If application is not complete it will not be processed.*

**The above information is given for the purpose of establishing a line of credit an is a true and correct statement.**

\_\_\_\_\_  
*Signature*

\_\_\_\_\_  
*Title*

\_\_\_\_\_  
*Date*

This application must be signed by a corporate officer or authorized representative who thereby grants permission to suppliers to release confidential credit information to Viking Industrial Center.

**Please email completed credit application to:  
info@vikingindustrialcenter.com**





**ST. PAUL**  
2550 Kasota Ave  
(800) 328-6505

**DULUTH**  
4730 Grand Ave  
(800) 232-1367

**FOREST LAKE**  
9205 Lake Drive NE  
(651) 756-8758

Safety, Fastener & Strut Specialists

[www.vikingindustrialcenter.com](http://www.vikingindustrialcenter.com)

[info@vikingindustrialcenter.com](mailto:info@vikingindustrialcenter.com)

**FIRST AID**

**EYE & FACE PROTECTION**

**HEAD PROTECTION**

**HAND PROTECTION**

**HI VISIBILITY GARMENTS**

**CONFINED SPACE ENTRY**

**LOCKOUT/TAGOUT**

**SURFACE PROTECTION PRODUCTS**

**REBAR CAPS**

**HEARING PROTECTION**

**RESPIRATORY PROTECTION**

**RAINWEAR & RUBBER BOOTS**

**FALL PROTECTION**

**GAS DETECTION**

**SIGNS**

**RENTAL EQUIPMENT**  
GAS MONITORS, TRIPODS, BLOWERS

**UNISTRUT & FITTINGS**

**CONSTRUCTION FASTENERS**

**THREADED ROD**

**DUCT, MASKING & PAINTERS TAPE**

**ROOFING SCREWS**

**HIGH SPEED & CARBIDE BITS**

**ADHESIVES & CAULKS**

**AUTO FEED SCREW DRIVING  
SYSTEMS**

**FOAM SEALANTS & FIRE  
STOPPING PRODUCTS**

**MARKING PAINT, CHALK**

**RIVET TOOLS & RIVETS**

**SECURITY FASTENERS**

**SAW BLADES**

**POWDER ACTUATED TOOLS,  
PINS AND LOADS**

**ELECTRICAL CORDS & GFCI**

**POLY SHEETING**

**Convenient  
Service Center Locations**

**ST PAUL**

**651-646-6374**

**2550 Kasofa AVE.**

**DULUTH**

**218-624-4851**

**4730 GRAND AVE.**

**FOREST LAKE**

**651-756-8758**

**9205 Lake Drive NE**



**Twin Cities Metro Area - 800-328-6505**

**Duluth/Superior Area - 800-232-1367**

**[www.vikingindustrialcenter.com](http://www.vikingindustrialcenter.com)**