



VIKING

Industrial Center

Fastener, Safety & Strut Specialists

Structural & Roofing Screws & Rivets

ST PAUL

- 651-646-6374
- 800-328-6505

DULUTH

- 218-624-4851
- 800-232-1367

FOREST LAKE

- 651-756-8758
- 800-328-6505

2024

www.vikingindustrialcenter.com



Viking Industrial Center is a family-owned business that has served thousands of companies and customers since 1959. Viking started out in the heart of the Twin Cities by selling fastening tools and equipment for construction. Shortly thereafter we added a full line of safety products. The two product lines worked in tandem, providing a broad array of quality construction fastening and safety products at reasonable prices with personalized service. Finally, a full line of strut products was added.

Viking has three convenient Minnesota locations. Our St. Paul and Columbus stores service walk-in customers in the Twin Cities metro area and suburbs. Our Duluth location is easily accessible to customers in northern Minnesota and northwestern Wisconsin.

Our service representatives can visit you at your site.

Unable to stop in? Place your order online through our website. We have in-stock inventory ready to ship out immediately. If you don't see what you are looking for, please give us a call. We have a very knowledgeable customer service staff waiting to assist you!

We take pride in our company and enjoy giving advice on products and helping our customers find what is right for them and their situations. Please contact us with any questions about our company or our products.

Viking Industrial Center Offers Jobsite Service



Customer Service Centers

**Store Hours: 7:00 a.m. - 4:00 p.m.
Monday - Friday**

St. Paul
2550 Kasota Avenue
(800) 328-6505
Phone (651) 646-6374
Fax (651) 646-7546
info@vikingindustrialcenter.com

Forest Lake
9205 Lake Drive NE
(800) 328-6505
Phone (651) 756-8758
Fax (651) 797-2942
info@vikingindustrialcenter.com

Duluth
4730 Grand Avenue
(800) 232-1367
Phone (218) 624-4851
Fax (218) 624-4788
info@vikingindustrialnorth.com

PLEASE NOTE: No expressed or implied warranties are made in this catalog.
Specifications are subject to change without notice.
Please call Viking Industrial Center at 1-800-328-6505 for current product data.

TERMS OF SALE

Payment: Net 30 days from invoice date.

FOB: Shipping Point.

Transportation: We will determine the best methods for transportation unless specified in order.

Returned Goods: Goods may be returned for credit, exchange or replacement only with authorization and subject to inspection and restocking charge.

Special & Custom Items: Special order and custom-made items become the property of the buyer and ARE NON-RETURNABLE.

New Accounts: In order to expedite shipments to new accounts, payment in full must accompany order. We do not make COD shipments.

Prices: All prices are subject to change or withdrawal without prior notice.

Credit Cards: We accept for credit card purchases with a 3.5% Credit Card Processing Fee



NOTICE: There is a minimum purchase of \$10 per order.

As our valued customer, you expect us to supply quality merchandise from reputable manufacturers at a fair market price, to ship and invoice your orders as rapidly as possible and to service what we sell.

As your supplier, we expect you to pay all bills according to our invoice terms, give us a reasonable amount of time to process "Will Call" orders, allow sufficient lead time for special and custom-made items, and most important, to let us know if there is a problem of any kind.

Transportation of Hazardous Materials

A. Hazardous Materials cannot be shipped by air.

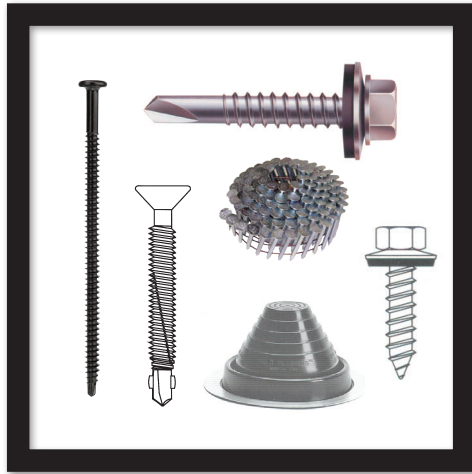
B. Hazardous Materials Shipped by UPS Ground Service require special processing and labeling and are subject to a special UPS handling charge.

C. Customers will be notified if the product being ordered is considered hazardous material. Some of the most common items classified as hazardous by the DOT are: compressed air and oxygen (for breathing equipment), test gas kits and cylinders, fusee flares and dry chemical fire extinguishers. Other products may be included as the DOT regulates.

NOTES

Structural & Roofing Screws & Rivets





Metal Building Screws - Woodgrip Screws	3
Painted Woodgrips	4
Color Selection Chart	5
Painted Blind Rivets	6
Rivets and Rivet Tools	7-8
Multi-Purpose, Construction & Finishing Screws	9
Metal Building Screws -Self Drill Sealers	10
Metal Building Sdcrows - Self Tapping Sealers	11
Roofing Drill Point Fasteners	12
Panel Fasteners & Accessories	13
Clip Screws and Seam Panel Clips	14
Closure and Venting Products - Pipe Flashing	15



Woodgrip™

HiLo Woodgrip™ Screws



Stainless Steel 1/4 HWH Sharp Point Assembled with Aluminum Bond Seal Metal to wood

Self Drills through the aluminum panel and taps into wood substrate. Min penetration in wood substance should be no less than 1".



Stainless Woodgrip™ Screws

Size (Inches)	Part Number	Qty/Bg/Cs
9 X 1	WGA100	250/bg - 3,000/cs
9 X 1-1/2	WGA150	250/bg - 2,500/cs
9 X 1-1/2	WGAP150DB	Painted Dark Bronze 250/bg - 2,500/cs
9 X 1-1/2	WGAP150TC	Painted Terracotta 250/bg - 2,500/cs
9 X 2	WGA200	250/bg - 2,000/cs
9 X 2-1/2	WGA250	250/bg - 1,500/cs
9 X 3	WGA300	250/bg - 1,000/cs

HiLo Woodgrip 10-15 Assembled Bond Seal Washer - Metal to Wood Self Drills through the metal panel and taps into wood substrate. Min penetration in wood substance should be no less than 1".

Part Number	Size (Inches)	Qty/Bg/Cs
WGH100	1"	250/bg - 3,000/cs
WGH150	1-1/2"	250/bg - 2,500/cs
WGH200	2"	250/bg - 2,000/cs
WGH250	2-1/2"	250/bg - 1,500/cs
WGH300	3"	250/bg - 1,000/cs



NO Washer - Metal to Wood

Part Number	Size (Inches)	Qty/Bg/Cs
WGN100	1"	250/bg - 3,000/cs
WGN150	1-1/2"	250/bg - 2,500/cs
WGN200	2"	250/bg - 2,000/cs
WGN250	2-1/2"	250/bg - 1,500/cs
WGN300	3"	250/bg - 1,000/cs

Bi-Metal Woodgrip 1/4 HWH Sharp Point Assembled with stainless Bond Seal Metal to wood

Self Drills through the metal panel and taps into wood substrate. Min penetration in wood substance should be no less than 1".

Bi-Metal Woodgrip™ Screws

Size (Inches)	Part Number	Qty/Bg/Cs
1"	WGBS100	250/bg - 3,000/cs
1-1/2"	WGBS150	250/bg - 2,500/cs
1-1/2"	WGBSP150DB	Painted Dark Bronze 250/bg - 2,500/cs
1-1/2"	WGBSP150MB	Painted Mansard Brown 250/bg - 2,500/cs
1-1/2"	WGBSP150TC	Painted Terracotta 250/bg/2,500/cs
2"	WGBS200	250/bg - 2,000/cs
2-1/2"	WGBS250	250/bg - 1,500/cs



Woodgrip™ #14 Type A Milled Point Screws

#14 Type A Milled Point Carbon Steel - Metal to wood

Self drilling metal thickness:
Sheet .018 – .030
Thickness is based on normal, single or multiple material thickness combined for total.
Min depth penetration into the wood sub structure: 1"

Length (Inches)	Part Number	Qty/Cs
14 X 1	MPHWHBWC1410100	2,500
14 X 1-1/2	MPHWHBWC1410150	2,000
14 X 2	MPHWHBWC1410200	1,500
14 X 2-1/2	MPHWHBWC1410250	1,000



Painted Screws

Woodgrip™

HiLo Woodgrip™ Screws
#10-15

Any color can be matched in any quantity!

Color	1"	1-1/2"	2"	2-1/2"	3"
Aged Copper	WGHP100AC	WGHP150AC	WGHP200AC	WGHP250AC	WGHP300AC
Almond	WGHP100AL	WGHP150AL	WGHP200AL	WGHP250AL	WGHP300AL
Ash Gray/Pac-Clad Granite	WGHP100AG	WGHP150AG	WGHP200AG	WGHP200AG	WGHP300AG
Award Blue	WGHP100AB	WGHP150AB	WGHP200AB	WGHP250AB	WGHP300AB
Bone White/Snow Drift White	WGHP100BW	WGHP150BW	WGHP200BW	WGHP250BW	WGHP300BW
Black	WGHP100BLK	WGHP150BLK	WGHP200BLK	WGHP250BLK	WGHP300BLK
Brandy Wine/Burgundy	WGHP100BR	WGHP150BR	WGHP200BRW	WGHP250BRW	WGHP300BR
Burn Slate	WGHP100BS	WGHP150BS	WGHP200BS	WGHP250BS	WGHP300BS
Champagne Metallic	WGHP100CM	WGHP150CM	WGHP200CM	WGHP250CM	WGHP300CM
Charcoal Gray	WGHP100CGY	WGHP150CGY	WGHP200CGY	WGHP250CGY	WGHP300CGY
Centria Evergreen	WGHP100EV	WGHP150EV	WGHP200EV	WGHP250EV	WGHP300EV
Centria Marble	WGHP100MA	WGHP150MA	WGHP200MA	WGHP250MA	WGHP300MA
City Scape	WGHP100CI	WGHP150CI	WGHP200CI	WGHP250CI	WGHP300CI
Colonial Red	WGHP100CR	WGHP150CR	WGHP200CR	WGHP250CR	WGHP300CR
Copper Penny	WGHP100CP	WGHP150CP	WGHP200CP	WGHP250CP	WGHP300CP
Dark Bronze	WGHP100DB	WGHP150DB	WGHP200DB	WGHP250DB	WGHP300DB
Dark Ivy	WGHP100DI	WGHP150DIV	WGHP200DI	WGHP250DI	WGHP300DI
Egg Shell	WGHP100ES	WGHP150ES	WGHP200ES	WGHP250ES	WGHP300ES
Electric Blue	WGHP100EB	WGHP150EB	WGHP200EB	WGHP250EB	WGHP300EB
Extra Dark Bronze	WGHP100EDB	WGHP150EDB	WGHP200EDB	WGHP250EDB	WGHP300EDB
Hartford Green	WGHP100HG	WGHP150HG	WGHP200HG	WGHP250HG	WGHP300HG
Hemlock Green	WGHP100HEMG	WGHP150HEG	WGHP200HEG	WGHP250HEG	WGHP300HEG
Ivory	WGHP100IV	WGHP150IV	WGHP200IV	WGHP250IV	WGHP300IV
Mansard Brown/Western Rust	WGHP100MBR	WGHP150MBR	WGHP200MBR	WGHP250MBR	WGHP300MBR
Matte Black	WGHP100MBK	WGHP150MBK	WGHP200MBK	WGHP250MBK	WGHP300MBK
Medium Bronze	WGHP100MBZ	WGHP150MBZ	WGHP200MBZ	WGHP250MBZ	WGHP300MBZ
Musket Brown	WGHP100MKB	WGHP150MKB	WGHP200MKB	WGHP250MKB	WGHP300MKB
Navy Blue	WGHP100NB	WGHP150NB	WGHP200NB	WGHP250NB	WGHP300NB
Pacific Blue	WGHP100PB	WGHP150PB	WGHP200PB	WGHP250PB	WGHP300PB
Patina Green	WGHP100PG	WGHP150PG	WGHP200PG	WGHP250PG	WGHP300PGN
Red Clay	WGHP100RC	WGHP150RC	WGHP200RC	WGHP250RC	WGHP300RC
Regal Blue	WGHP100RB	WGHP150RB	WGHP200B	WGHP250RB	WGHP300RB
Regal Red	WGHP100RR	WGHP150RR	WGHP200RR	WGHP250RR	WGHP300RR
Roman Bronze	WGHP100RBZ	WGHP150RBZ	WGHP200RBZ	WGHP250RBZ	WGHP300RBZ
Sandstone	WGHP100SA	WGHP150SA	WGHP200SA	WGHP250SA	WGHP300SA
Scotch Red	WGHP100SR	WGHP150SR	WGHP200SR	WGHP250SR	WGHP300SR
Sherwood Green	WGHP100SG	WGHP150SG	WGHP200SG	WGHP250SG	WGHP300SG
Sierra Tan	WGHP100ST	WGHP150ST	WGHP200ST	WGHP250ST	WGHP300ST
Silver Metallic	WGHP100SM	WGHP150SM	WGHP200SM	WGHP250SM	WGHP300SM
Sky Blue/Slate Blue	WGHP100SB	WGHP150SB	WGHP200SB	WGHP250SB	WGHP300SB
Slate Gray	WGHP100SLGR	WGHP150SLGR	WGHP200SLGR	WGHP250SLGR	WGHP300SLGR
Stone White	WGHP100STW	WGHP150SW	WGHP200SW	WGHP250SW	WGHP300SW
Teal	WGHP100T	WGHP150T	WGHP200T	WGHP250TL	WGHP300T
Terra Cotta	WGHP100TC	WGHP150TC	WGHP200TC	WGHP250TC	WGHP300TC
Terratone	WGHP100TT	WGHP150TT	WGHP200TT	WGHP250TT	WGHP300TT
Tropical Patina	WGHP100TP	WGHP150TP	WGHP200TP	WGHP250TP	WGHP300TP
Vintage	WGHP100VT	WGHP150VT	WGHP200VT	WGHP250VT	WGHP300VT
Weathered Zinc	WGHP100WZ	WGHP150WZ	WGHP200WZ	WGHP250WZ	WGHP250WZ
Wicker	WGHP100WK	WGHP150WK	WGHP200WK	WGHP250WK	WGHP300WK

Chromagard color is a high performance acrylic polyurethane finish that's formulated for exceptional adhesion, fade resistance, and gloss retention.



UNA-CLAD™ METAL

COLOR SELECTION

Stone White	Bone White	Almond	Sandstone	Sierra Tan
Slate Gray	Aged Zinc*	Cityscape	Charcoal Gray	Matte Black
Mansard Brown	Burnished Slate*	Medium Bronze	Dark Bronze	Extra Dark Bronze
Brandywine	Regal Red	Colonial Red	Terra Cotta	Hartford Green
Award Blue*	Regal Blue	Sky Blue	Electric Blue*	Teal
Sherwood Green	Dark Ivy	Patina Green	Helmlock Green	Tropical Patina
Vintage*@	Silver Metallic*	Classic Copper*	Champagne Metallic*	

Colors shown are as close to actual painted steel as allowed by the printing process. Contact your local Sales Rep for actual metal samples. SRI numbers available by request.

* = Denotes premium color. @ = 20-year finish warranty.

Firestone

Painted Blind Rivets

Packaged
100/bg - 5,000/cs

Part Number	Color
RIVSS43AL	Almond
RIVSS43AG	Ash Gray
RIVSS43AB	Award Blue
RIVSS43BNW	Bone White
RIVSS43BL	Black
RIVSS43BNRD	Barn Red
RIVSS43BS	Burnished Slate
RIVSS43BU	Blue
RIVSS43CM	Champagne Metallic
RIVSS43CG	Charcoal Gray
RIVSS43CGN	Classic Green
RIVSS43CO	Cordovan Burgundy
RIVSS43CS	City Scape
RIVSS43CR	Colonial Red
RIVSS43CP	Copper Penny
RIVSS43DB	Dark Bronze
RIVSS43DI	Dark Ivy
RIVSS43EB	Electric Blue
RIVSS43EDB	Extra Dark Bronze
RIVSS43GG	Gusto Gold
RIVSS43GR	Gray Velvet
RIVSS43HG	Hartford Green
RIVSS43HEG	Hemlock Green
RIVSS43MB	Mansard Brown
RIVSS43MBLK	Matte Black
RIVSS43MBZ	Medium Bronze
RIVSS43PG	Patina Green
RIVSS43RB	Regal Blue
RIVSS43RR	Regal Red
RIVSS43RBZ	Roman Bronze
RIVSS43SA	Sandstone
RIVSS43SDB	Sand Beige
RIVSS43SG	Sherwood Green
RIVSS43ST	Sierra Tan
RIVSS43SM	Silver Metallic
RIVSS43SB	Sky Blue
RIVSS43SG	Slate Gray
RIVSS43STW	Stone White
RIVSS43T	Teal
RIVSS43TC	Terra Cotta
RIVSS43TP	Tropical Patina
RIVSS43VT	Vintage
RIVSS43WZ	Weathered Zinc
RIVSS43WHT	White

18-8 Stainless 43 Blind Rivets 4-3 (1/8) (GR 1/8-3/16)

- Stainless Steel Body & Mandrel; Dome Head
- STST43D - 1/8" diameter: grip range 0.25" to 0.187"
- Metal Trim Applications
- Light Gauge Installations
- Secure and Permanent Fastening Solution
- Won't Loosen in High Vibration or Fatigue Applications
- Good Installed Appearance
- Quality and Repeatability of Assembly
- No Over Driving or Under Driving
- Consistent Installation Function



Chromagard color is a high performance acrylic polyurethane finish that's formulated for exceptional adhesion, fade resistance, and gloss retention.

WeatherMaster Metal Roof Sealants




A premium-grade, superior polymer formula that offers unbeatable adhesion to all metals including Kynar™ coated metals, aluminum, galvanized steel, copper and most common building materials.

Available in a variety of colors. More information on this and similar products can be found in our other catalogs:

- **Fastener, Safety & Strut Specialist**
- **Fastenrite**
- **Paint, Marking, Sealants & Adhesives**

Aluminum Rivets



Part Number	Type	Grip Range	Diam.
RIVAB32A	AB3-2A	1/16-1/8	3/32
RIVAB34A	AB3-4A	1/8-1/4	3/32
RIVAB36A	AB3-6A	1/4-3/8	3/32
RIVAB42A	AB4-2A	1/16-1/8	1/8
RIVAB43A	AB4-3A	1/8-3/16	1/8
RIVAB44A	AB4-4A	3/16-1/4	1/8
RIVAB45A	AB4-5A	1/4-5/16	1/8
RIVAB46A	AB4-6A	5/16-3/8	1/8
RIVAB48A	AB4-8A	3/8-1/2	1/8
RIVAB52A	AB5-2A	1/32-1/8	5/32
RIVAB58A	AB5-8A	3/8-1/2	5/32
RIVAB610A	AB6-10A	1/2-5/8	3/16
RIVAB612A	AB6-12A	1/2-3/4	3/16
RIVAB614A	AB6-14A	.75-.87	3/16
RIVAB616A	AB6-16A	7/8-1	3/16
RIVAB618A	AB6-18A	1-1-1/8	3/16
RIVAB62A	AB6-2A	1/16-1/8	3/16
RIVAB64A	AB6-4A	1/8-1/4	3/16
RIVAB66A	AB6-6A	1/4-3/8	3/16
RIVAB68A	AB6-8A	3/8-1/2	3/16
RIVAB84A	AB8-4A	1/8-1/4	1/4
RIVAB88A	AB8-8A	3/8-1/2	1/4

Large Flange Rivets - Aluminum




Part Number	Type	Grip Range	Diam.
RIVABL43A	ABL4-3A	1/8-1/4	3/16
RIVABL64A	ABL6-4A	1/8-1/4	3/16
RIVABL68A	ABL6-8A	3/8-1/2	3/16
RIVABL610A	ABL6-10A	1/2-5/8	3/16
RIVABL612A	ABL6-12A	5/8-3/4	3/16
RIVABL616A	ABL6-16A	7/8-1	3/16

Large Flange Rivets - Stainless Steel



Part Number	Steel Type	Grip Range	Diam.
RIVSSBL44	SSBL4-4	3/16-1/4	1/8
RIVSSBL64	SSBL6-4	3/16-1/4	3/16
RIVSSBL66	SSBL6-6	1/4-3/8	3/16
RIVSSBL610	SSBL6-10	1/2-5/8	3/16
RIVSSBL616	SSBL6-16	7/8-1	3/16

Steel Rivets




Part Number	Type	Grip Range	Diam.
RIVSB41	SB4-1	3/32-1/16	1/8
RIVSB42	SB4-2	1/16-1/8	1/8
RIVSB43	SB4-3	1/8-3/16	1/8
RIVSB44	SB4-4	3/16-1/4	1/8
RIVSB46	SB4-6	5/16-3/8	1/8
RIVSB48	SB4-8	3/8-1/2	1/8
RIVSB52	SB5-2	1/32-1/8	5/32
RIVSB54	SB5-4	3/16-1/4	5/32
RIVSB56	SB5-6	1/4-3/8	5/32
RIVSB58	SB5-8	3/8-1/2	5/32
RIVSB510	SB5-10	1/2-5/8	3/32
RIVSB62	SB6-2	1/16-1/8	3/16
RIVSB64	SB6-4	1/8-1/4	3/16
RIVSB66	SB6-6	1/4-3/8	3/16
RIVSB68	SB6-8	3/8-1/2	3/16
RIVSB610	SB6-10	1/2-5/8	3/16
RIVSB82	SB8-2	1/32-1/8	1/4
RIVSB84	SB8-4	1/8-1/4	1/4
RIVSB86	SB8-6	1/4-3/8	1/4
RIVSB88	SB8-8	3/8-1/2	1/4
RIVSB810	SB8-10	1/2-5/8	1/4

Large Flange Rivets - Steel



Part Number	Steel Type	Grip Range	Diam.
RIVSBL64	SBL6-4	1/8-1/4	3/16
RIVSBL66	SBL6-6	1/4-3/8	3/16
RIVSBL68	SBL6-8	3/8-1/2	3/16
RIVSBL610	SBL6-10	1/2-5/8	3/16
RIVSBL612	SBL6-12	5/8-3/4	3/16

Stainless Steel Rivets



Part Number	Type	Grip Range	Diam.
RIVSSB42S	SSB4-2S	1/16-1/8	1/8
RIVSSB43S	SSB4-3S	1/8-3/16	1/8
RIVSSB44S	SSB4-4S	3/16-1/4	1/8
RIVSSB46S	SSB4-6S	5/16-3/8	1/8
RIVSSB48S	SSB4-8S	3/8-1/2	1/8
RIVSSB52S	SSB5-2S	1/32-1/8	5/32
RIVSSB54S	SSB5-4S	3/16-1/4	5/32
RIVSSB56S	SSB5-6S	1/4-3/8	5/32
RIVSSB58S	SSB5-8S	3/8-1/2	5/32
RIVSSB510S	SSB5-10S	1/2-5/8	5/32
RIVSSB62S	SSB6-2S	1/6-1/8	3/16
RIVSSB64S	SSB6-4S	1/8-1/4	3/16
RIVSSB66S	SSB6-6S	1/4-3/8	3/16
RIVSSB68S	SSB6-8S	3/8-1/2	3/16
RIVSSB612S	SSB6-12S	5/8-3/4	3/16
RIVSSB812S	SSB8-12S	5/8-3/4	1/4



Multi-Grip Rivets
Aluminum Rivets - Steel Mandrel

Part Number	Type	Grip Range	Diam.
RIVMGAB6264	AB62-64MG	1/16-1/4	3/16
RIVMGAB6367	AB63-67MG	3/16-7/16	3/16



Copper Rivets - Brass Mandrel

Part Number	Type	Grip Range	Diam.
RIVCB42B	CB4-2B	1/6-1/8	1/8
RIVCB44B	CB4-4B	3/16-1/4	1/8

Flat Head Aluminum Rivet Nuts

Part Number	Type	Grip Range	#/Bx
RIV47210	6-32	.010-.080	100
RIV47220	8-32	.010-.080	100
RIV47230	10-24	.010-.080	100
RIV47240	10-32	.010-.080	100
RIV47250	1/4-20	.010-.080	50

Rivet Back-Up Washers



Part Number	Type	Material	For Rivet	Size/Shape
RIVSS08	SS-8	Steel	1/8	3/8-Round
RIVSS09	SS-9	Steel	5/32"	7/16-Round
RIVSS10	SS-10	Steel	1/4	1/2-Round
RIVAS08	AS-8	Aluminum	1/8	3/8-Round
RIVAS10	AS-10	Aluminum	3/16	1/2-Round
RIVAS12	AS-12	Aluminum	1/4	1/2-Round

Rivet Tools

RIVHP2

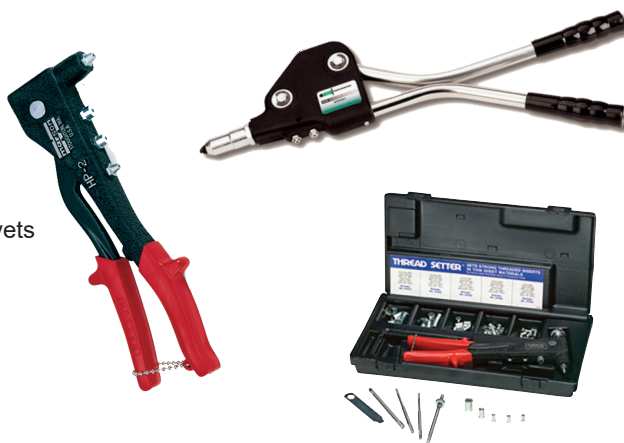
Hand Riveter: Pulls 3/32, 1/8, 5/32 & 3/16 Aluminum & Steel Rivets

RIV39031

Big Daddy Long Handle Hand Riveter: Pulls up to 1/4 Rivets

RIV39313

Thread Setter Kit: Sets Aluminum Rivet Nuts 8-32, 10-24, 10-32 & 1/4-20





Multi-Purpose Wood Screws

Framing Screw, Flat Head w/Nibs



Part Number	Size
CSTFHNC08125	8 x 1-1/4"
CSTFHNC08150	8 x 1-1/2"
CSTFHNC08200	8 x 2"
CSTFHNC09150	9 x 1-1/2"
CSTFHNC09175	9 x 1-3/4"
CSTFHNC09200	9 X 2"
CSTFHNC09250	9 X 2-1/2"
CSTFHNC09275	9 X 2-3/4"
CSTFHNC09313	9 X 3-1/8"
CSTFHNC10250	10 X 2-1/2"
CSTFHNC10313	10 X 3-1/8"
CSTFHNC10350	10 X 3-1/2"
CSTFHNC10400	10 X 4"
CSTFHNC10450	10 X 4-1/2"
CSTFHNC12400	12 X 4"
CSTFHNC12500	12 X 5"
CSTFHNC12600	12 X 6"
CSTFHNC12700	12 X 7"
CSTFHNC12800	12 X 8"

.316 Stainless Steel, Flat Head w/Nibs

Part Number	Size
CSTFHSS08175	8 x 1-3/4"
CSTFHSS09200	2 x 2"
CSTFHSS10250	10 x 2-1/2"
CSTFHSS10275	10 x 2-3/4"
CSTFHSS10300	10 x 3"
CSTFHSS10400	10 x 4"



Construction Screws

Structural Screw, Truss Head w/Nibs



Part Number	Size
CSTTHNC10150	10 x 1-1/2"
CSTTHNC10200	10 x 2"
CSTTHNC10250	10 x 2-1/2"
CSTTHNC10313	10 x 3-1/8"
CSTTHNC25150	1/4 x 1-1/2"
CSTTHNC25200	1/4 x 2"
CSTTHNC25250	1/4 x 2-1/2"
CSTTHNC25313	1/4 x 3-1/8"
CSTTHNC31250	5/16 X 2-1/2"
CSTTHNC31313	5/16 X 3-1/8"
CSTTHNC31400	5/16 X 4"
CSTTHNC31500	5/16 X 5"
CSTTHNC31600	5/16 X 6"
CSTTHNC38318	3/8 X 3-1/8"
CSTTHNC38400	3/8 X 4"
CSTTHNC38500	3/8 X 5"
CSTTHNC38600	3/8 X 6"
CSTTHNC38700	3/8 X 7"
CSTTHNC38800	3/8 X 8"
CSTTHNC38910	3/8 X 10"
CSTTHNC38912	3/8 X 12"
CSTTHNC38914	3/8 x 14"
CSTTHNC38916	3/8 x 16"

.316 Stainless Steel, Truss Head w/Nibs

Part Number	Size
CSTTHSS31250	5/16 X 2-1/2"
CSTTHSS31300	5/16 X 3"
CSTTHSS31400	5/16 X 4"



Low Profile Cap Screw



Self Tapping

Part Number	Size
CSTCSC08125	8 x 1-1/4"
CSTCSC08150	8 x 1-1/2"
CSTCSC08200	8 x 2"
CSTCSC08250	8 x 2-1/2"
CSTCSC08313	8 x 3-1/8"

TOPSTAR™ Screw

Adjustable Shim Screw

Part Number	Size
CSTSC2538250	1/4-3/8 x 2-1/2"
CSTSC2538313	1/4-3/8 x 3-1/8"



Finishing Screws

Fine Trim Head - Self Tapping

Part Number	Size
CSTTHC08125	8 x 1-1/4"
CSTTHC08150	8 x 1-1/2"
CSTTHC08200	8 x 2"
CSTTHN08250	8 x 2-1/2"
CSTTHC08313	8 x 3-1/8"
CSTTHC09313	9 x 3-1/8"
CSTTHC09400	9 x 4"
CSTTHC09500	9 x 5"



Re-Fine Trim Head - Self Tapping

Part Number	Sizes
CSTRHC08200	8 x 2"
CSTRHC08250	8 X 2-1/2"
CSTRHC08313	8 X 3-1/8"
CSTRHC09313	9 x 3-1/8"
Stainless Steel	
CSTRHSS08250	8 x 2-1/2"



TOPSTAR™ Bit

Part Number	Package
TOPSTARBIT	Crown & Bit





Impax™ self-drill

Impax™ — Performance Self Drill Sealer
The metal building industry's leading fastener



Painted Screws

Chromagard color is a high performance acrylic polyurethane finish that's formulated for exceptional adhesion, fade resistance, and gloss retention. Any color can be matched in any quantity!

Contact us for a list of available colors.

12-14 Impax™ SD3 Sealer Screw - 5/16" HWH

Assembled bondSeal Metal to Metal

Length (Inches)	Part Number	Qty/Bg/Cs
10-16 X 5/8	SDHWHBWC1016062	7,500/cs
10-16 X 3/4	SDHWHBWC1016075	5,000
10-16 X 1	SDHWHBWC1016100	5,000
10-16 X 1-1/2	SDHWHBWC1016150	3,500
12-14 X 3/4	SDHWHBWC1214075	250/bg - 2,500/cs
12-14 X 1	SDHWHBWC1214100	250/bg - 2,500/cs
12-14 X 1-1/4	SDHWHBWC1214125	250/bg - 2,500/cs
12-14 X 1-1/2	SDHWHBWC1214150	250/bg - 2,000/cs
12-14 X 2	SDHWHBWC1214200	1,500/cs
12-14 X 3	SDHWHBWC1214300	1,500/cs
12-14 X 4	SDHWHBWC1214400	1,000/cs



Impax™ — Heavy Metal Thickness Structural Drill Screws

1/4-14 Impax SD3 Sealer Screw - 3/8" HWH

Assembled bonSeal Metal to metal

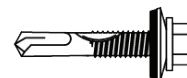
Length (Inches)	Part Number	Qty/Cs
1/4-14 X 3/4	SDHWHBWC2514075	2,500
1/4-14 X 1	SDHWHBWC2514100	2,000
1/4-14 X 1-1/2	SDHWHBWC2514150	2,000
1/4-14 X 2	SDHWH2BWC2514200	1,500
1/4-14 X 2-1/2	SDHWHBWC2514250	1,500
1/4-14 X 3	SDHWHBWC2514300	750
1/4-14 X 4	SDHWHBWC2514400	1,000



12-24 Impax™ SD3 & SD5 Sealer Screw .410 Stainless Steel - 5/16" HWH

Assembled bondSeal Metal to metal

Length (Inches)	Part Number	Qty/Cs
Grade 3		
12-14 X 3/4	SDHWHBWSS1214075	2,500/cs
12-14 X 1	SDHWHBWSS1214100	2,500/cs
12-14 X 1-1/4	SDHWHBWSS1214125	2,500/cs
12-14 X 1-1/2	SDHWHBWSS1214150	2,000/cs
Grade 5		
12-14 X 1-9/16	SD5HWHBWSS1214156	2,500



12-24 Impax™ SD4.5 & SD5 Sealer Screw 5/16" HWH

Assembled bondSeal Metal to metal

Length (Inches)	Part Number	Qty/Cs
Grade 4.5		
12-24 X 1-1/4	SD45HWHBWC1224125	2,500/cs
Grade 5		
12-24 X 1-1/4	SD5HWHBWC1224125	2,500/cs



1/4-20 Impax™ SD5 Sealer Screw - 3/8" HWH

Assembled bondSeal Metal to metal

Length (Inches)	Part Number	Qty/Cs
1/4-20 X 3	SD5HWHBWC2520300	1,000/cs
14-20 X 5	SD5HWHBWC2520500	600/cs
14-20 X 8	SD5HWHBWC2520800	500/cs

Tapping Screws — Carbon Steel and Stainless Steel



Features:

Self-tapping fasteners are the original metal construction fastener that can be used in metal to metal and metal to wood applications. Tapping screws are available in long lengths for specialty applications.

#17 Type AB Strip out repair Type AB Metal to metal

Attachment thickness: .036 – .060
Min projection: 3/8" of threads below substrate



Length (Inches)	Part Number	Qty/Cs
#17 X 3/4"	SMHHBWZ1712075	2,500
#17 X 1"	SMHHBWZ1712100	2,000
#17 X 1-1/2"	SMHHBWZ1712150	2,000
.304 Stainless Steel		
#17 X 3/4"	SMHHBWSS12075	2,500
#17 X 1"	SMHHBWSS12100	2,000
#17 X 1-1/2"	SMHHBWSS12150	1,500

#14 Type AB and B Metal to metal

Attachment thickness: .044 – .500
Thickness is based on normal, single thickness purlin/girt or multiple material thickness combined for total.
Min projection: 3/8" of threads below substrate



Length (Inches)	#14 AB - Stainless Steel Part Number	Qty/Cs	#14 B - Zinc Part Number	Qty/Cs
14-14 X 3/4	SMHHBWSS2514075	2,500	SMBHHBWZ2514075	2,500
14-14 X 1	SMHHBWSS2514100	2,500	SMBHHBWZ2514100	2,500
14-14 X 1-1/2	—	—	SMBHHBWZ2514150	2,000
14-14 X 2	—	—	SMBHHBWZ2514200	2,000
14-14 X 2-1/2	SMHHBWSS2514250	—	—	—
14-14 X 3	SMHHBWSS2514300	—	SMBHHBWZ2514300	1,500
14-14 X 3-1/2	SMHHBWSS2514350	—	—	—
14-14 X 4	—	—	SMBHHBWZ2514400	1,000

#14 Type A Metal to metal

Attachment thickness: .044 – .075
The hole size determines installation performance and pullout strength.
Thickness is based on normal, single thickness purlin/girt or multiple material thickness combined for total.
Min projection: 3/8" of threads below substrate

Metal Thickness	Drill Bit Size
.021 – .026	1/8 (.125)
.027 – .050	3/16 (.187)
.051 – .075	#8 (.199)



Length (Inches)	Part Number	Qty/Cs
14-10 X 3/4	SMHHBWZ2510075	2,500
14-10 X 1	SMHHBWZ2510100	2,500
14-10 X 1-1/4	SMHHBWZ2510125	2,000
14-10 X 1-1/2	SMHHBWZ2510150	2,000
14-10 X 2	SMHHBWZ2510200	2,000
14-10 X 2-1/2	SMHHBWZ2510250	1,500
14-10 X 3	SMHHBWZ2510300	1,500
14-10 X 3-1/2	SMHHBWZ2510350	1,250
14-10 X 4	SMHHBWZ2510400	1,000
.304 Stainless Steel		
14-10 X 1-1/2	SMHHBWSS2510150	2,000
14-10 X 2	SMHHBWSS2510200	2,000
14-10 X 2-1/2	SMHHBWSS2510250	1,500
14-10 X 4	SMHHBWSS2510400	1,000

Metal Thickness	Drill Bit Size
AB .021 – .026	1/8 (.125)
AB .027 – .050	5/32 (.156)
AB .051 – .075	#8 (.199)
AB .075 – .110	#7 (.201)
B .065 – .085	#8 (.199)
B .085 – .115	#7 (.201)
B .115 – .375	#1 (.228)
B .375 – .500	15/64 (.231)

Drill Point Fasteners

Features:

- Extra stable #3 Phillips drive
- Drill point design prevents faster walking
- 13 threads per inch provides higher pull-out values
- Drill point cuts through gravel and Bur
- Cathodic epoxy e-coat

Application

Insulation and cover board attachment to steel and wood roof decks



#12 Phillips Drill Point Fastener #3 Drive

Size (inches)	Part Number	#/Case
1-5/8	IPFPPH12162	1000
2-1/4	IPFPPH12225	1000
2-7/8	IPFPPH12287	1000
3	IPFPPH12300	1000
3-1/4	IPFPPH12325	1000
3-3/4	IPFPPH12375	1000
4	IPFPPH12400	1000
4-1/2	IPFPPH12450	1000
5	IPFPPH12500	1000
6	IPFPPH12600	1000
7	IPFPPH12700	500
8	IPFPPH12800	500

#15 Phillips Drill Point Fastener #3 Drive

Size (inches)	Part Number	#/Bucket
2	IPFPPH15200	1000
3	IPFPPH15300	1000
4	IPFPPH15400	1000
5	IPFPPH15500	1000
6	IPFPPH15600	1000
7	IPFPPH15700	500
8	IPFPPH15800	500
9	IPFPPH15900	250
10	IPFPPH15910	250
11	IPFPPH15911	250
12	IPFPPH15912	250
14	IPFPPH15914	250
16	IPFPPH15916	250



Features:

- Extra stable #3 Phillips drive
- Drill point design prevents faster walking
- 13 threads per inch provides higher pull-out values
- Drill point cuts through gravel and Bur
- Cathodic epoxy e-coat

Application

Insulation and embrane attachment to steel, wood and structural concrete decks



#14 Phillips Drill Point Fastener #3 Drive, Recessed Truss Head

Size (inches)	Part Number	#/Case
1-1/4	IPFPPH14125	1000
2	IPFPPH14200	1000
3	IPFPPH14300	1000
4	IPFPPH14400	1000
5	IPFPPH14500	1000
5-1/2	IPFPPH14550	1000
6	IPFPPH14600	1000
7	IPFPPH14700	500
8	IPFPPH14800	500
9	IPFPPH14900	500
10	IPFPPH14910	500
11	IPFPPH14911	500
12	IPFPPH14912	500

Features:

- Extra stable #3 Phillips drive
- Drill point design prevents faster walking
- 13 threads per inch provides higher pull-out values
- Drill point cuts through gravel and Bur
- Cathodic epoxy e-coat

Application

Insulation and embrane attachment to steel, wood and structural concrete decks

Insulation Panel Fasteners & Accessories

Features:

- 410 stainless steel provides resistance to corrosion in mild to light industrial environments
- Extra stable #3 Phillips drive
- Low profile truss head
- 13 threads per inch provides higher pull-out values

Features:

- Extra Stable #3 square drive
- Flat head profile provides for flush engagement to the nailboard
- Oversized head reduces the number of fasteners required
- No plates required
- Drill point and high-strength thread profile ensure positive attachment
- Cathodic epoxy e-coat

Application

Insulation and embrane attachment to steel and wood in a corrosive environment

Application

Insulation panel and nail board attachment to steel and wood roof decks

HD Stainless

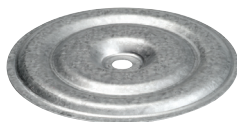
#14 Heavy Duty .410 Stainless Steel



Size (inches)	Part Number	#/Case
1-1/2	IPFPPHSS14150	1000
2	IPFPPHSS14200	1000
3	IPFPPHSS14300	1000
4	IPFPPHSS14400	1000
5	IPFPPHSS14500	1000
6	IPFPPHSS14600	1000
7	IPFPPHSS14700	500
8	IPFPPHSS14800	500
10	IPFPPHSS14910	250
12	IPFPPHSS14912	250

#14 Insulation Panel Fasteners

Size (inches)	SIPTP Thread Point	#/Bucket
2-5/8	IPFTH14262	500
3	IPFTH14300	500
3-1/2	IPFTH14350	500
4	IPFTH14400	500
4-1/2	IPFTH14450	500
5	IPFTH14500	500
5-1/2	IPFTH14550	500
6	IPFTH14600	500
6-1/2	IPFTH14650	500
7	IPFTH14700	500
7-1/2	IPFTH14750	500
8	IPFTH14800	500
8-1/2	IPFTH14850	250
9	IPFTH14900	250



Metal Insulation Plates

Size and Description	Part Number	#/Case
2" Galvanized Metal	DFPLATEG2	1000
3" Galvanized Metal	DFPLATEG3	1000
3" Plastic	DFPLATEP3	1000

2" & 3" Metal Plates are for Phillips Head only.

Standing Seam Panel Fastening Solutions

Pancake Head Clip Screws



#3 Self Drill

Part No.	Drive	Finish	Size	Qty.
SDPPKHZ1016100	Phillips	Zinc	10-16 x 1	5,000/cs
SDPPKHZ1016150	Phillips	Zinc	10-16 x 1-1/2	4,000/cs
SDPSPKHZ1016100	Phil Sq	Zinc	10-16 x 1	5,000/cs
SDPSPKHZ1016150	Phil Sq	Zinc	10-16 x 1-1/2	2,500/cs
SDPSPKHZ1016200	Phil Sq	Zinc	10-16 x 2	2,000/cs
SDPSPKHC1016062	Phil Sq	HR Coat	10-16 x 5/8	7,000/cs
SDPSPKHC1016100	Phil Sq	HR Coat	10-16 x 1	5,000/cs
SDPSPKHC1016150	Phil Sq	HR Coat	10-16 x 1-1/2	4,000/cs
SDPSPKHC1016200	Phil Sq	HR Coat	10-16 x 2	2,000/cs
SDPSPKHC1214100	Phil Sq	HR Coat	12-14 x 1	5,000/cs
.410 Stainless Steel				
SDPSPKHSS1016100	Phil Sq	SS	10-16 x 1	5,000/cs



Sharp Point - Zinc Plated

Part No.	Drive	Size	Qty.
SPPPKHZ1012100	Phillips	10-12 x 1	5,000/cs
SPPPKHZ1012150	Phillips	10-12 x 1-1/2	3,000/cs
SPPSPKHZ1208100	Phillips	12-8 x 1	4,000/cs
SPPSPKHZ1208150	Phillips	12-8 x 1-1/2	3,000/cs
SPPSPKHZ1214100	Phil Sq	12-14 x 1	2,500/cs
Low Profile			
SPPSLPZ1208100	Phil Sq	12-8 x 1	4,000/cs
SPPSLPZ1208150	Phil Sq	12-8 x 1-1/2	3,000/cs
SPPSLPZ1208200	Phil Sq	12-8 x 2	2,000/cs



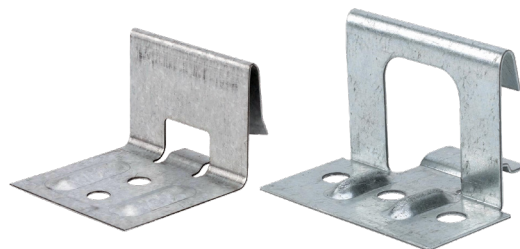
Sharp Point - .300 Stainless Steel

Part No.	Drive	Size	Qty.
Low Profile			
SPPPKHSS1012100	Phil Sq	10-12 x 1	4,000/cs
SPPPKHSS1016200	Phil Sq	10-16 x 2	2,500/cs

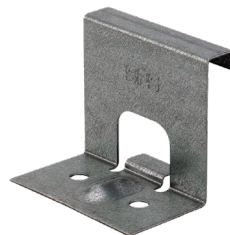
Sharp Point - Hard Coat

Part No.	Drive	Size	Qty.
Low Profile			
SPPPKHC1012100	Phil Sq	10-12 x 1	5,000/cs
SPPPKHC1012150	Phil Sq	10-12 x 1-1/2	2,000/cs
SPPPKHC1013200	Phil Sq	10-13 x 2	2,000/cs
SPPPKHC1013300	Phil Sq	10-13 x 3	1,500/cs
Ultra Low Profile			
SPPSLPHC1009113	Phil Sq	10-9 x 1/18	5,000/cs

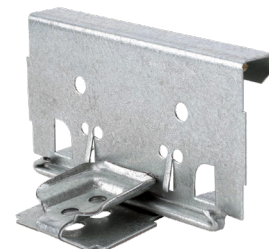
Broad selection of height, galvanized or stainless steel gauges



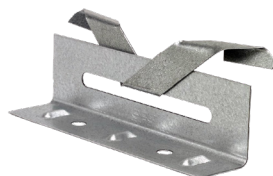
Snap Lock Panel Clips



Fixed Panel Clips



Float Panel Clip



Butterfly Clip

Bermuda (Roof & Wall)
Panel Clip





Hot Dip Galvanized Concrete Masonry Drive Anchors

Part No.	Length	Box Qty.	Bulk Part No.	Bulk Qty.
PG113	1-1/8	100*	PGB113	1000
PG150	1-1/2		PGB150	
PG200	2		PGB200	
PG250	2-1/2		PGB250	
PG300	3		PGB300	
PG350	3-1/2		PGB350	
PG400	4	500	PGB400	
PG450	4-1/2		PGB450	
PG500	5		PGB500	

*One straight shank bit included in each box of 100, no bit included in bulk quantities.

Square and Round Base Pipe Flashing



Master Flash Square Base - Black

Size	Part Number	Pipe Size	Base Size
1	PFSG#1	1/4" – 2-3/4"	4-1/2"
2	PFSG#2	7/8" – 4"	6"
3	PFSG#3	1/4" – 5-3/4"	8"
4	PFSG#4	2-3/4" – 7"	10"
5	PFSG#5	4" – 8-1/4"	11"
6	PFSG#6	4-3/4" – 10"	12"
7	PFSG#7	5-1/2" – 11"	14"
8	PFSG#8	6-3/4" – 13-1/2"	17"

Features:

Pipe opening can be easily customized on job site utilizing clearly marked pipe diameters on each flashing
 EPDM and Silicone are both flexible materials, resistant to ultraviolet rays, cracking or weathering
 Available in EPDM black or gray and silicone red
 The aluminum base is corrosion resistant and conforms easily to any panel configuration or roof pitch
 Retrofit flashing is available for piping with welded caps or cross bars



Flasher Round Base - Black

Pipe	Part Number	Pipe Size	Base Size
1	PFRG#1	1/4" – 2-1/2"	4-3/4"
2	PFRG#2	1-3/4" – 3"	6-1/4"
3	PFRG#3	1/4" – 5"	7-3/4"
4	PFRG#4	3" – 6-1/4"	9-1/4"
5	PFRG#5	4-1/4" – 7-3/4"	10-1/2"
6	PFRG#6	5" – 9"	13"
7	PFRG#7	6" – 11"	14-1/2"
8	PFRG#8	7" – 13"	16-1/2"
9	PFRG#9	9" – 19"	25-1/4"

Material Specifications

Test Type	EPDM	Silicone
Advance ozone resistance test @ 500 pphm	70 Hrs.	70 Hrs.
High Temperature Intermittent	+275° F	+500° F
Continuous	+212° F	+437° F
Low Temperature Resistance tested to Tensile Strength	-65° F 1450 psi	-100° F 700 psi



ORIGINATOR

[Empty box for originator name]



Office (651) 646-6141
Toll Free (800) 328-6505

9205 Lake Drive NE, Columbus MN 55025

Email: info@vikingindustrialcenter.com

APPLICATION FOR CREDIT

Date: _____

COMPANY: _____

Application Requested by: _____

INVOICE TO:

SHIP TO:

(Address/P.O.Box) _____

(Street Address) _____

(City, State & Zip) _____

(City, State & Zip) _____

Phone: _____ Fax: _____

Email: _____

Invoice Preference: Fax _____ Email _____

If your company is Tax Exempt, a copy of the certificate is required.

Years in business: _____

Accounts Payble Contact: _____

Trade References:

Name of Supplier

Phone Number

Fax Number *(required)*

1. _____

2. _____

3. _____

Bank Reference:

Name of Bank _____

Phone Number _____

Contact at Bank _____

Account Number _____

If application is not complete it will not be processed.

The above information is given for the purpose of establishing a line of credit an is a true and correct statement.

Signature

Title

Date

This application must be signed by a corporate officer or authorized representative who thereby grants permission to suppliers to release confidential credit information to Viking Industrial Center.

**Please email completed credit application to:
info@vikingindustrialcenter.com**



ST. PAUL
2550 Kasota Ave
(800) 328-6505

DULUTH
4730 Grand Ave
(800) 232-1367

FOREST LAKE
9205 Lake Drive NE
(651) 756-8758

Safety, Fastener & Strut Specialists

www.vikingindustrialcenter.com

info@vikingindustrialcenter.com

FIRST AID

EYE & FACE PROTECTION

HEAD PROTECTION

HAND PROTECTION

HI VISIBILITY GARMENTS

CONFINED SPACE ENTRY

LOCKOUT/TAGOUT

SURFACE PROTECTION PRODUCTS

REBAR CAPS

HEARING PROTECTION

RESPIRATORY PROTECTION

RAINWEAR & RUBBER BOOTS

FALL PROTECTION

GAS DETECTION

SIGNS

RENTAL EQUIPMENT
GAS MONITORS, TRIPODS, BLOWERS

UNISTRUT & FITTINGS

CONSTRUCTION FASTENERS

THREADED ROD

DUCT, MASKING & PAINTERS TAPE

ROOFING SCREWS

HIGH SPEED & CARBIDE BITS

ADHESIVES & CAULKS

**AUTO FEED SCREW DRIVING
SYSTEMS**

**FOAM SEALANTS & FIRE
STOPPING PRODUCTS**

MARKING PAINT, CHALK

RIVET TOOLS & RIVETS

SECURITY FASTENERS

SAW BLADES

**POWDER ACTUATED TOOLS,
PINS AND LOADS**

ELECTRICAL CORDS & GFCI

POLY SHEETING

**Convenient
Service Center Locations**

ST PAUL

651-646-6374

2550 Kasofa AVE.

DULUTH

218-624-4851

4730 GRAND AVE.

FOREST LAKE

651-756-8758

9205 Lake Drive NE



Twin Cities Metro Area - 800-328-6505

Duluth/Superior Area - 800-232-1367

www.vikingindustrialcenter.com